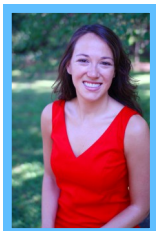


The Department of Psychology Monthly Newsletter



Professors Credited in International Periodicals



In an article in the *Financial Times* discussing social media and addiction, **Assistant Professor, Kristen Lindquist**, is quoted

saying, “social information feels intrinsically rewarding to people. We get a jolt of dopamine when someone ‘likes’ our Facebook post or retweets our Twitter link. Over time, the effect on the reward center in the brain is similar to what makes drug addicts go back for another line of cocaine.” She adds, “You end up developing an association between Facebook and goodness and that sustains the behavior. As with cocaine addicts, over time, you need more and more of that substance to get that feeling.”



Distinguished Professor, Barbara Fredrickson, was quoted in an article in *Wired Magazine* that discusses two

traditionally proposed contradictions: happiness and work. The article notes that, “Barbara Fredrickson and colleagues at the University of North Carolina at Chapel Hill have shown for more than a decade of lab-based research that happiness is about creating and responding to opportunities. She calls this the ‘broaden and build theory,’ as the experience of happiness enables us to broaden our range of possible responses to situations and over time helps build our confidence and skills.”

Interview Day February 8, 2013

The Department of Psychology will host its annual Interview Day on Friday, February 8, 2013. This is an invitation-only event at which outstanding graduate school applicants learn more about our department through interviews and informal conversations with faculty, graduate students and staff. Interview Day will kick off with a morning reception in Hyde Hall beginning at 8:15 AM, followed by a few words from Regina Carelli, Acting Department Chair, and Mark Hollins, Director of Graduate Studies.



FEBRUARY 2013



SPRING SEMESTER



Special points of interest:

- Faculty News
- Interview Day
- Departmental Events
- CDS Events
- Graduate Student Support Group
- Research Opportunities for Faculty
- Research Opportunities for Graduate Students & Postdocs

Upcoming Dates:

Interview Day	Feb. 8
---------------	--------

2013 Department of
Psychology Commencement

Carmichael Auditorium
Sunday, May 12, 2013
12:30 PM

No Tickets Required





Departmental Events

Friday, February 1	<p>CLINICAL LUNCH 12–1 PM, Davie 261</p> <p>DJC Guest Speaker: Tonya Armstrong, “I Will Trust in the Lord ‘Til I Die.’ Navigating the Religious and Spiritual Worldviews of African-American Clients”</p>
Monday, February 4	<p>QUANTITATIVE FORUM 12–1 PM, Davie 347</p> <p>Alberto Maydeu-Oliverez, University of Barcelona; talk title TBA: please check the website.</p> <p>COGNITIVE TEA 4–5 PM, Davie 347</p> <p>Matt Lowder, “The Experiments that I Finished: Structural Separation Reduces the Cost of Complement Coercion”</p> <p>SOCIAL ORG 4–5:30 PM, Davie 302</p> <p>Dr. Benjamin Converse, University of Virginia Departments of Public Policy and Psychology</p>
Tuesday, February 5	<p>BEHAVIORAL NEUROSCIENCE SEMINARS 12:30–1:30 PM, Davie 302</p> <p>Dr. Andrey Ryabinin, “Social Aspects of Alcohol Abuse: Lessons from a Monogamous Rodent Species”</p> <p>*Lunch with speaker. All graduate students and post docs invited.</p>
Wednesday, February 6	<p>DEVELOPMENTAL LUNCH 12–1 PM, Davie 347</p> <p>Kurtz-Costes Lab, UNC Department of Psychology</p>
Monday, February 11	<p>QUANTITATIVE FORUM 12–1 PM, Davie 347</p> <p>Amy Herring, UNC Department of Biostatistics, “Modeling Birth Defects”</p> <p>COGNITIVE TEA 4–5 PM. Davie 347</p> <p>Erol Ozmerol, “Asynchronous Glimpsing of Speech with Real and Simulated Hearing Loss”</p> <p>SOCIAL ORG 4–5:30 PM, Davie 302</p> <p>Dr. Cynthia Khan, UNC Department of Public Health</p>
Wednesday, February 13	<p>DEVELOPMENTAL LUNCH 12–1 PM, Davie 347</p> <p>TBA: please check the website.</p>



Departmental Events (cont'd)

Friday, February 15	CLINICAL LUNCH 12–1 PM, Davie 261 Professional Development/Student Check-in/Data Blitz
Monday, February 18	QUANTITATIVE FORUM 12–1 PM, Davie 347 Brooke Magnus & Zane Blanton, talk title TBA: please check the website . SOCIAL ORG 4–5:30 PM, Davie 302 Dr. Cheryl Carmichael, Brooklyn College, <i>Tentative</i> : please check the website .
Wednesday, February 20	DEVELOPMENTAL LUNCH 12–1 PM, Davie 347 Barbara Goldman, Ph.D., Frank Porter Graham Child Development Institute
Thursday, February 21	BEHAVIORAL NEUROSCIENCE SEMINARS 12:30–1:30 PM, Davie 302 Dr. Gary Aston-Jones Talk *Lunch with speaker. All graduate students and post docs invited.
Friday, February 22	CLINICAL LUNCH 12–1 PM, Davie 261 Fourth Friday Free
Monday, February 25	QUANTITATIVE FORUM 12–1 PM, Davie 347 Veronica Cole & Shane Hutton, talk title TBA: please check the website . COGNITIVE TEA 4–5 PM, Davie 347 Bruno Estigarribia, “A processing model of code-switching? The case of Guarani–Spanish contact” SOCIAL ORG 4–5:30 PM, Davie 302 Dr. Eranda Jayawickreme, Wake Forest University Department of Psychology
Wednesday, February 27	DEVELOPMENTAL LUNCH 12–1 PM, Davie 347 Elizabeth Pungello, Ph.D., Frank Porter Graham Child Development Institute
Friday, March 1	CLINICAL LUNCH 12–1 PM, Davie 261 Professional Development– Irene Skowronek, Integrated Primary Care and Mental Health



*Semester topic: Developmental Mechanisms in Racial & Ethnic Minority Children

12:00 – 1:15 PM, in the CDS lower-level classroom

<u>DATE</u>	<u>SPEAKER</u>	<u>TITLE</u>
Monday, February 4	Linda Burton Duke University	<i>“Hiding in Plain Sight: Racialization, Colorism, and the Intimate Union and Childbearing Behaviors of Adolescent and Young-Adult Rural Mothers”</i>
Monday, February 11	Enrique Neblett UNC at Chapel Hill	<i>“Racial and Ethnic Protective Mechanisms in Ethnic Minority Youth Development”</i>
Monday, February 18	Carol Markstrom West Virginia University	TBA, please check the website
Monday, February 25	Richard M. Lee University of Minnesota	<i>“Acknowledgment of race and difference in transracial, transnational adoptions”</i>

[Graduate Student Support Group at CAPS](#)

Graduate Student Support Group: UNC’s Counseling and Psychological Services is offering a free and confidential group for any UNC graduate or professional students who are seeking support for concerns such as managing academic demands and pressure; balancing school and personal life; exploring career issues; improving relationships with advisors, professors, and fellow students; or overcoming lack of progress or productivity. This group is fairly unstructured and topics can vary from session to session depending on the needs of group members. A brief screening is required for participation.

They will be meeting on Tuesdays from 2:00 to 3:15 PM. For more information please contact Melissa Yao, Ph.D. (myao@email.unc.edu) or Elizabeth Misiti, LCSW (misiti@email.unc.edu) or please visit the [website](#).

NIH Research Opportunities for Faculty

Effects of Adolescent Binge Drinking on Brain Development
National Institute on Alcohol Abuse and Alcoholism

[PA-12-027](#) (R01)

[PA-12-028](#) (R21)

Application Due Date: [Standard due dates apply](#)

Research on Autism and Autism Spectrum Disorders (R01)

National Institute of Mental Health

Eunice Kennedy Shriver National Institute for Child Health
and Human Development

National Institute on Deafness and Other Communication
Disorders

National Institute of Environmental Health Sciences

National Institute of Nursing Research

National Center for Complementary and Alternative Medicine

Office of Dietary Supplements

[PA-10-158](#)

Application Due Date: [Standard due dates apply](#)

*Psychosocial/Behavioral Interventions and Services Research in Autism
Spectrum Disorders* (R34)

Eunice Kennedy Shriver National Institute for Child Health
and Human Development

National Institute of Mental Health

National Institute on Deafness and Other Communication
Disorders

[PA-11-283](#)

Application Due Date: [Standard due dates apply](#)

Prescription Drug Abuse

National Institute of Drug Abuse

[PA-13-016](#) (R21)

[PA-13-015](#) (R01)

Application Due Date: [Standard due dates apply](#)

*Behavioral Science Track Award for Rapid Transition
(B/START)*(R03)

[PAR-12-251](#)

National Institute of Drug Abuse

Application Due Date: [Standard due dates apply](#)

Alcohol Research Resource Awards (R24)

[PAR-12-237](#)

National Institute on Alcohol Abuse and Alcoholism

Application Due Date: [Standard due dates apply](#)

Substance Use and Abuse, Risky Decision Making and HIV/AIDS

National Institute on Drug Abuse

National Institute on Alcohol Abuse and Alcoholism

[PA-11-006](#) (R01)

[PA-11-007](#) (R21)

[PA-11-008](#) (R03)

Application Due Date: [Standard AIDS application due dates apply](#)

*Women and Sex/Gender Differences in Drug and Alcohol
Abuse/Dependence*

National Institute of Drug Abuse

National Institute on Alcohol Abuse and Alcoholism

[PA-11-047](#) (R01)

[PA-11-048](#) (R21)

[PA-11-049](#) (R03)

Application Due Date: [Standard due dates apply](#)

Research Short Courses (R25)

[PA-12-207](#)

Eunice Kennedy Shriver National Institute for Child Health
and Human Development

Application Due Date: [Standard due dates apply](#)

*Translational Research for the Development of Novel Interventions for
Mental Disorders* (R21/R33)

National Institute of Mental Health

Office of Dietary Supplements

[PAR-11-177](#)

Application Due Date: [Standard due dates apply](#)

Family and Interpersonal Relationships in an Aging Context (R01)

National Institute on Aging

[PA-11-128](#)

Application Due Date: [Standard due dates apply](#)

*Collaborative R34s for Pilot Studies of Innovative Treatments in
Mental Disorders* (R34)

National Institute of Mental Health

[PAR-12-071](#)

Application Due Date: [Standard due dates apply](#)

*Standard NIH due dates for all activity codes including new
submissions, renewals, and resubmissions can be found [here](#).

*If you are interested in applying for any of these opportunities,
please contact Christina Rodriguez, Grants Management Officer,
at ccrod@unc.edu.

NSF Research Opportunities for Faculty

Major Research Instrumentation (MRI) Program: Instrument
Acquisition or Development

[NSF 13-517](#)

Application Due Date: February 21, 2013

Integrated Support Promoting Interdisciplinary Research and
Education (INSPIRE)

[NSF 13-518](#)

Letter of Intent required

Application Due Date: May 13, 2013 and May 29, 2013

*If you are interested in applying for any of these opportunities,
please contact Christina Rodriguez, Grants Management Officer,
at ccrod@unc.edu.

DOD Research Opportunities for Faculty

Defense Sciences Research and Technology

[DARPA-BAA-11-65](#)

Application Due Date: February 7, 2013

*If you are interested in applying for any of these opportunities,
please contact Christina Rodriguez, Grants Management Officer,
at ccrod@unc.edu.

Research Opportunities for Graduate Students & Postdoctoral Scholars

Ruth L. Kirschstein National Research Service Awards (NRSA)

[PA-11-111](#) (F-31 Predoctoral)

[PA-11-112](#) (F-31D Predoctoral Diversity)

[PA-11-113](#) (F-32 Postdoctoral)

Application Due Date: [Standard due dates apply](#)

ASA Graduate Student Investigator Award in Social Psychology
[Guidelines](#)

Application Due Date: March 1, 2013

*If you are interested in applying for any of these opportunities,
please contact Christina Rodriguez, Grants Management Officer,
at ccrod@unc.edu.



Please submit all newsletter
contributions and inquiries
to Laura DePersia at
lauradepersia@unc.edu.