

Department of Psychology

Monthly Newsletter

DEPARTMENTAL NEWS

CONGRATULATIONS TO THE DECEMBER 2011 GRADUATES!

Courtney Cameron, M.A.
Heather Lassetter, Ph.D.
Yang Liu, M.A.
Emily Lowery-Gionta, Ph.D.
James McGinley, M.A.
Emily Parks, Ph.D.
Audrey Wells, M.A.

Behavioral Neuroscience
Behavioral Neuroscience
Quantitative Psychology
Behavioral Neuroscience
Quantitative Psychology
Cognitive Psychology
Behavioral Neuroscience

Phi Beta Kappa inducts 18 Psychology students

Phi Beta Kappa is the nation's oldest and most honored of all college honorary societies. New members receive certificates and Phi Beta Kappa keys, the organization's symbol. Listed below are 18 Psychology majors who were inducted into Phi Beta Kappa on November 21st.

Breanne E. Allen	Grace H. Beard	Shannon M. Blakey
Jessica E. Bodford	Benjamin Brumley	Emily E. Crowder
Kelci D. Harris	Sadie L. Hasbrouck	Christine Jackson
Caroline R. Jones	Olivia L. Lamontagne	Kelsey A. Ludwig
Lindsey K. Miller	Sonia L. Oakley	Michael V. Patrone
Matthew B. Spangler	Emma R. Swift	Kelly E. Wolfe

Phi Beta Kappa membership is open to undergraduates in the College of Arts and Sciences and professional degree programs who meet stringent eligibility requirements. Less than one percent of all college students qualify. Each year, Phi Beta Kappa chapters and alumni associations across the country raise and distribute more than \$1 million in awards, scholarships and prizes benefiting high school and college students. Invitation to membership in Phi Beta Kappa is a reflection of outstanding achievement. The Department congratulates the 18 students listed above on this excellent honor.

In This Issue:

- > December Graduates
- > Phi Beta Kappa
- > Upcoming Events
- > Faculty News
- > Student News
- > Research Opportunities
- > Staff Holiday Luncheon
- > Winter Blood drive
- > Staff Updates

Upcoming Dates:

Classes End	Dec. 7
Reading Days	Dec. 8 Dec. 14
Fall Commencement	Dec. 18
Spring Semester Begins	Jan. 9

DEPARTMENTAL EVENTS

Behavioral Neuroscience Seminars

Seminars are held from 12:30pm — 1:30pm in Davie 302.

(unless otherwise indicated)

December 6th: **Jennifer Rinker, Ph.D.**
Department of Psychology, UNC Chapel Hill
Thiele Lab

Clinical Lunch Series

Lunches are held from 12pm — 1pm in Davie 261.

December 2nd: **Sara Algoe, Ph.D.**
Assistant Professor, Social Psychology Program
UNC Chapel Hill

Cognitive Talk Series

Meetings are held from 4pm—5pm in Davie 347.

December 5th: **NO Cognitive Talk Series**

Developmental Lunch

Lunches are held from 12pm — 1pm in Davie 347.

December 5th: **Cheatham Lab**
Department of Psychology
UNC Chapel Hill



Quantitative Forum

Meetings are held from 12pm — 1pm in Davie 347.

December 5th: **San Keller, Ph.D.**
Principal Research Scientist, American Institutes for Research

Social ORG Talk Series

Meetings are held from 4pm — 5:30pm in Davie 310.

December 5th: **NO Social ORG Talk Series**



**Center for
Developmental Science**

Carolina Consortium on Human Development

December 5th: **Richard Lerner**
Tufts University

"Developmental Science, Relational Developmental System Theory, and the Study of Positive Youth Development"

FACULTY NEWS



Barbara Fredrickson, Kenan Distinguished Professor and Director of Social Psychology, has been selected to speak at UNC's December Commencement ceremony on December 18th.

[Click to view full article.](#)



STUDENT NEWS

Hung-Yu Chen received the David Bray Peele Award to support his Honors project, "Interaction of stress and prenatal cocaine exposure on dopamine release and social behavior in adolescent rats." **Kent M. Lee** also received this award to support his Honors project, "A psychophysiological investigation into the emotional effects of pain offset." This research grant honors the memory of David Bray Peele, an Honors student in our Department many years ago. Congratulations to you both!

Gretchen Sprow (Behavioral Neuroscience, **Dr. Todd Thiele**, advisor) is the recipient of the 2011-2012 King Research Excellence Award. This award honors Emeritus Professor Richard A. King for his many contributions to our Department over the years, including his lifelong commitment to research excellence.

Jenna Clark (Social Program, advisor Melanie Green), **Chris Foster** (Cognitive Program, advisor Kelly Giovanello), and **Nicholas Wagner** (Developmental, advisor Martha Cox) are the 2011-2012 recipients of the Chase-Dashiell-Crane Award. This award is intended to be used for research expenses. Congratulations!

Ryan Jacoby (Clinical Program, advisor Jon Abramowitz) and **Elise Rice** (Social Program, advisor Barbara Fredrickson) are the 2011-2012 recipients of the Knowles-Dashiell Award. This award is intended to be used for research expenses. Congratulations to you both!

Research Opportunities

For Faculty:

NIH:

Advancing HIV Prevention through Transformative Behavioral and Social Science Research (R01)

[RFA-MH-12-080](#)

National Institute of Mental Health

National Institute on Alcohol Abuse and Alcoholism

National Institute of Allergy and Infectious Diseases

Eunice Kennedy Shriver National Institute of Child Health and Human Development

National Institute on Drug Abuse

Application Receipt Date: January 6, 2012

Basic Research on Decision Making: Cognitive, Affective, and Developmental Perspectives (R01)

[RFA-MH-12-130](#)

National Institute of Mental Health

National Cancer Institute

National Eye Institute

National Heart, Lung, and Blood Institute

National Human Genome Research Institute

National Institute on Aging

National Institute on Alcohol Abuse and Alcoholism

National Institute of Allergy and Infectious Diseases

National Institute of Arthritis and Musculoskeletal and Skin Diseases

National Institute of Biomedical Imaging and Bioengineering

Eunice Kennedy Shriver National Institute of Child Health and Human Development

National Institute on Deafness and Other Communication Disorders

National Institute of Dental and Craniofacial Research

National Institute of Diabetes and Digestive and Kidney Diseases

National Institute on Drug Abuse

National Institute of Environmental Health Sciences

National Institute of General Medical Sciences

National Institute of Neurological Disorders and Stroke

National Institute of Nursing Research

National Institute on Minority Health and Health Disparities

National Library of Medicine

Fogarty International Center

National Center for Complementary and Alternative Medicine

National Center for Research Resources

Office of Behavioral and Social Sciences Research

Office of Disease Prevention

Office of Dietary Supplements

Office of Rare Diseases

Office of Research on Women's Health

Application Receipt Date: January 18, 2012

NIH Director's Transformative Research Awards (R01)

[RFA-RM-11-006](#)

Application Receipt Date: January 18, 2012

Health Services Research on the Prevention and Treatment of Drug and Alcohol Use (R01)

[PA-08-263](#)

Application Receipt Date: February 5, 2012

(continued)

Health Services Research on the Prevention and Treatment of Drug and Alcohol Use (R21)

[PA-07-310](#)

Application Receipt Date: February 16, 2012

Health Services Research on the Prevention and Treatment of Drug and Alcohol Use (R03)

[PA-09-022](#)

Application Receipt Date: February 16, 2012

Senior Scientist Research and Mentorship Award (K05)

[PA-09-076](#)

Application Receipt Date: February 12, 2012

NSF:

Developmental and Learning Sciences (DLS)

[PD 08-1698](#)

Application Receipt Date: January 15, 2012

Social Psychology

[PD 98-1332](#)

Application Receipt Date: January 15, 2012

Cognitive Neuroscience

[09-0563](#)

Application Receipt Date: January 24, 2012

Smart Health and Wellbeing (SHB)

[12-512](#)

Application Receipt Date: February 6, 2012

Other:

William T. Grant Foundation *Enhancing our understanding of how youth setting work*

[Link to Announcement](#)

Letter of Inquiry due: January 5, 2012

For Graduate Students:

NSF- SBE Doctoral Dissertation Research Improvement Grants

[11-547](#)

Application Receipt Dates: January 15, January 18, January 30 (refer to guidelines for appropriate due date)

U.S. Census Bureau Postdoctoral Research Program

[link to guidelines](#)

Application Receipt Date: January 31, 2012

2012 Jack Kent Cooke Foundation Dissertation Fellowship

[link to guidelines](#)

Application Receipt Date: February 3, 2012

U.S. Census Bureau Dissertation Fellowship Program

[link to guidelines](#)

Application Receipt Date: February 28, 2012





Annual Staff Holiday Luncheon

*The Department of Psychology will host the
Annual Staff Holiday Luncheon
on Thursday, December 22nd
beginning at 11:30am
at the Carolina Inn.*

*Please RSVP to Jennifer Workman at
jworkman@unc.edu by Friday, December 9th.*



13th Annual Holiday Edition of the Carolina Blood Drive

When: Tuesday, December 13th
Where: Woollen Gym
Time: 7:30am—1:00pm



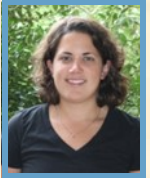
Be a hero for the holidays and help save a life. All presenting donors will receive a free soup bowl (with a recipe from Chef Cat Cora) and a chance to win a pair of roundtrip DELTA airline tickets. Free parking for donors will be available in Cobb Deck. [Click here](#) to schedule your appointment today. For more information, please contact **Benefits Services**.

GIVE THE PERFECT GIFT. GIVE BLOOD.

STAFF UPDATES



CHRISTINA RODRIGUEZ, Grants Manager, joined the Department on October 3rd. Christina has a B.A. from the University of Georgia and gained experience in grants administration after working in the Office for Sponsored Programs at UGA. Prior to Christina's relocation to North Carolina, she held a joint position between a private stem cell research company and UGA. Her experience in proposal development and submissions spans both the academic and private sectors.



GINA WOOLDRIDGE, Instructional and Developmental Program Coordinator, accepted a position in the Business School as a Student Services Specialist. Gina's last day was November 11th. The Department wishes her the best in her new position.



CHRISTIAN LINCOLN, Accounting Technician, accepted a position in the Dean's Office where he will be exposed to a broader perspective on accounting and finance in higher education. His last day with the Department was November 18th. The Department wishes him the best in his new position.

Edited by:

Jennifer Workman

Please send all
submissions to:

jworkman@unc.edu



Newsletters are available online at <http://psychology.unc.edu/news-events/newsletters>