

# THE DEPARTMENT OF PSYCHOLOGY MONTHLY NEWSLETTER

FALL SEMESTER

DECEMBER 2014

## FACULTY RESEARCH SPOTLIGHT

Dr. Stacey Daughters, an associate professor in the clinical program, recently completed a pilot study testing a smartphone enhanced version of LETS ACT, a behavioral activation treatment for substance use. Because treatment engagement outside of therapy sessions is low among substance users, Dr. Daughters' team has developed a web-based app that will reinforce responses to non-substance related rewards. Study participants were provided a smart phone pre-loaded with the app, which sends text reminders, tracks progress and moods, and asks the user to check in each day. Dr. Daughters hopes to build out the app so that it might one day be used as a standalone tool for addiction treatment.



### SPECIAL POINTS OF INTEREST:

- *Faculty Research Spotlight*
- *Department News*
- *Student Spotlight*
- *Departmental Events*
- *Research Opportunities*



### IMPORTANT UPCOMING DATES:

Faculty Meeting	12/3
Last day of Classes	12/3
Winter Blood Drive	12/9



## DEPARTMENT NEWS

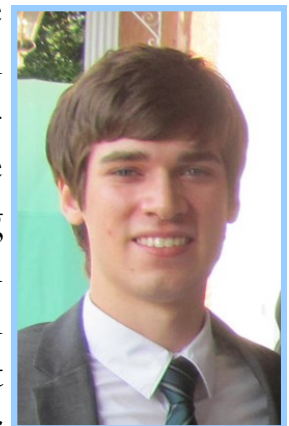
Congratulations to **Dr. Carol Cheatham** who recently received the National TRIO Achiever's Award at the Council for Opportunity in Education's 33rd Annual Conference Gala.

Congratulations to **Dr. Peter Gordon** and **Renske Hoedemaker**, whose article “It takes time to prime: Semantic priming in the ocular lexical decision task” was selected by APA for mention in Particularly Exciting Experiments in Psychology (PeePs).

Congratulations to **Melanie Fischer**, who received the American Psychological Association (APA) Dissertation Research Award. The purpose of this award is to assist science-oriented doctoral students of psychology with research costs.

## STUDENT SPOTLIGHT

Daniel Barrus is a senior working with Dr. Don Lysle in the Behavioral Neuroscience program. He works with an animal model of Post-Traumatic Stress Disorder known as Stress-Enhanced Fear Learning. This model focuses on the generalization of a trauma to a distinct, nonthreatening environment that occurs in PTSD. This year, he is completing an honors thesis examining the specific role of hippocampal astrocytes in this maladaptive fear learning process. The project is a unique blend of behavior and technology, using Designer Receptors Exclusively Activated by Designer Drugs (DREADDs), which are pharmacogenetically altered receptors that allow for precise control of the brain's astrocyte activity. Before getting involved in research, Daniel thought that most of the work he'd be doing would be menial tasks like washing dishes or entering data into spreadsheets. However, he's gotten to be actively involved in research, including being trained to do surgeries, perform various assays, and conduct experimental procedures.



## DECEMBER DEPARTMENTAL EVENTS

### BN Seminar Schedules

Davie 302, 12:30—1:45 PM

12/2 Postdoc Expectations (open to all BN graduate students and post docs)

### Clinical Lunch Schedules

Davie 261, 12—1 PM

Will resume in January

### Quantitative Forum

Davie 347, 12—1 PM

12/1 Peter Molenaar, Penn State University

### Cognitive Tea

Davie 347, 4— 5 PM

12/1 Keith Payne, UNC Psychology

### Social ORGs

Davie 302, 12—1 PM

Will resume in January

### Developmental Lunch

Davie 347, 12—1 PM

12/3 Judith Meece, UNC—School of Education



[Mondays, 2—3 :30 PM in CDS 2nd floor conference room](#)

12/1	Dr. Jill Hamm, UNC-CH
------	-----------------------

## FACULTY RESEARCH OPPORTUNITIES (NSF)

*Social Psychology*

[PD-98-1332](#)

**Application Due Date: 01/15/15**

*Developmental and Learning Sciences*

[PD-08-1698](#)

**Application Due Date: 01/15/15**

*Decision, Risk and Management Sciences (DRMS)*

[PD 98-1321](#)

**Application Due Date: 01/18/15**

*Methodology, Measurement, and Statistics (MMS)*

[12-510](#)

**Application Due Date: 01/29/15**

*Perception, Action & Cognition*

[PD 09-7252](#)

**Application Proposal Window: 01/15/15 to 02/02/15  
(Research Proposals)**

**Application Proposal Window: 04/01/15 to 04/15/15  
(Workshops and Conferences)**

*Science of Organizations (SoO)*

[PD 11-8031](#)

**Application Due Date: 02/01/15**

## FACULTY RESEARCH OPPORTUNITIES (NIH)

*Mechanistic Studies of Pain and Alcohol Dependence*

National Institute on Alcohol Abuse and Alcoholism

National Institute on Drug Abuse

[PA-15-026](#) (R01)

**Application Due Date: [Standard due dates apply](#)**

*BRAIN Initiative: Planning for Next Generation Human Brain Imaging (R24)*

National Institute of Mental Health

National Center for Complementary and Alternative Medicine

National Eye Institute

National Institute on Aging

National Institute on Alcohol Abuse and Alcoholism

National Institute of Biomedical Imaging and Bioengineering

Eunice Kennedy Shriver National Institute of Child Health and Human Development

National Institute on Drug Abuse

National Institute on Deafness and Other Communication Disorders

National Institute of Neurological Disorders and Stroke

[RFA-MH-15-200](#) (R24)

**Letter of Intent Due Date: 02/18/15**

**Application Due Date: 03/18/15**

*BRAIN Initiative: New Technologies and Novel Approaches for Large-Scale Recording and Modulation in the Nervous System*

National Institute of Neurological Disorders and Stroke

National Center for Complementary and Alternative Medicine

National Eye Institute

National Institute on Aging

National Institute on Alcohol Abuse and Alcoholism

National Institute of Biomedical Imaging and Bioengineering

Eunice Kennedy Shriver National Institute of Child Health and Human Development

National Institute on Drug Abuse

National Institute on Deafness and Other Communication Disorders

National Institute of Mental Health

[RFA-NS-15-003](#) (U01)

**Letter of Intent Due Date: 01/10/15**

**Application Due Date: 02/10/15**

## FACULTY RESEARCH OPPORTUNITIES (NIH CONT.)

*BRAIN Initiative: Optimization of Transformative Technologies for Large Scale Recording and Modulation in the Nervous System*

National Institute of Neurological Disorders and Stroke

National Center for Complementary and Alternative Medicine

National Eye Institute

National Institute on Aging

National Institute on Alcohol Abuse and Alcoholism

National Institute of Biomedical Imaging and Bioengineering

Eunice Kennedy Shriver National Institute of Child Health and Human Development

National Institute on Drug Abuse

National Institute on Deafness and Other Communication Disorders

National Institute of Mental Health

[RFA-NS-15-004](#) (U01)

**Letter of Intent Due Date: 01/10/15 / Application**

**Due Date: 02/10/15**

*BRAIN Initiative: Integrated Approaches to Understanding Circuit Function in the Nervous System*

National Institute of Neurological Disorders and Stroke

National Center for Complementary and Alternative Medicine

National Eye Institute

National Institute on Aging

National Institute on Alcohol Abuse and Alcoholism

National Institute of Biomedical Imaging and Bioengineering

Eunice Kennedy Shriver National Institute of Child Health and Human Development

National Institute on Drug Abuse

National Institute on Deafness and Other Communication Disorders

National Institute of Mental Health

Office of Behavioral and Social Science Research

[RFA-NS-15-005](#) (U01)

**Letter of Intent Due Date: 01/10/15 / Application**

**Due Date: 02/10/15**

*Substance Use and Abuse, Risky Decision Making and HIV/AIDS*

National Institute on Drug Abuse

National Institute on Alcohol Abuse and Alcoholism

[PA-14-061](#) (R01)

[PA-14-062](#) (R21)

[PA-14-063](#) (R03)

**Application Due Date: [Standard due dates apply](#)**

*Building Interdisciplinary Research Careers in Women's Health*

Division of Program Coordination, Planning and Strategic Initiatives

Office of Research on Women's Health

Eunice Kennedy Shriver National Institute of Child Health and Human Development

National Institute on Aging

National Institute of Allergy and Infectious Diseases

National Institute of Arthritis and Musculoskeletal and Skin Diseases

National Institute on Drug Abuse

National Institute of Dental and Craniofacial Research

National Institute of Environmental Health Sciences

[RFA-OD-15-001](#) (K12)

**Letter of Intent Due Date: 12/05/14 / Application**

**Due Date: 01/05/14**

*Administrative Supplements for Research on Sex/Gender Differences*

Many Institutes – See Program Announcement

[PA-15-034](#) (Administrative Supplement)

**Application Due Date: 01/12/15**

*Epidemiology of Drug Abuse*

National Institute on Drug Abuse

[PA-15-001](#) (R21)

[PA-15-002](#) (R03)

[PA-15-003](#) (R01)

**Application Due Date: [Standard due dates apply](#)**

*Biobehavioral and Technological Interventions to Attenuate Cognitive Decline in Individuals with Cognitive Impairment or Dementia*

National Institute of Nursing Research

National Institute on Aging

[PA-15-015](#) (R21)

[PA-15-016](#) (R15)

[PA-15-017](#) (R01)

**Application Due Date: [Standard due dates apply](#)**

*Women & Sex/Gender Differences in Drug and Alcohol Abuse/Dependence*

National Institute on Drug Abuse

National Institute on Alcohol Abuse and Alcoholism

[PA-14-036](#) (R21)

[PA-14-037](#) (R03)

[PA-14-038](#) (R01)

**Application Due Date: [Standard due dates apply](#)**

## FACULTY RESEARCH OPPORTUNITIES (NIH CONT.)

### *Modeling Social Behavior (R01)*

National Cancer Institute  
National Institute on Alcohol Abuse and Alcoholism  
National Institute of Biomedical Imaging and Bioengineering  
Eunice Kennedy Shriver National Institute of Child Health and Human Development  
National Institute of General Medical Sciences  
National Institute of Mental Health  
National Center for Complementary and Alternative Medicine  
[PAR-13-374](#)

**Application Due Date:** [Standard due dates apply](#)

### *Neuroscience Research on Drug Abuse*

National Institute on Drug Abuse  
[PA-13-338](#) (R01)  
[PA-13-337](#) (R21)  
[PA-13-336](#) (R03)

**Application Due Date:** [Standard due dates apply](#)

### *Behavioral Science Track Award for Rapid Transition (B/START) (R03)*

[PAR-12-251](#)

National Institute on Drug Abuse

**Application Due Date:** [Standard due dates apply](#)

### *Implication of New Digital Media Use for Underage Drinking, Drinking-Related Behaviors, and Prevention Research*

National Institute on Alcohol Abuse and Alcoholism  
[PA-13-262](#) (R01)  
[PA-13-263](#) (R21)

**Application Due Date:** [Standard due dates apply](#)

### *Research Short Courses (R25)*

Eunice Kennedy Shriver National Institute for Child Health and Human Development  
[PA-12-207](#)

**Application Due Date:** [Standard due dates apply](#)

### *Effects of Cannabis Use and Cannabinoids on the Developing Brain*

National Institute on Drug Abuse  
[PA-14-163](#) (R01)  
[PA-14-162](#) (R21)  
[PA-14-164](#) (R03)

**Application Due Date:** [Standard due dates apply](#)

### *Healthy Habits: Timing for Developing Sustainable Healthy Behaviors in Children and Adolescents*

National Institute of Nursing Research  
Office of Behavioral and Social Sciences Research  
[PA-14-177](#) (R01)  
[PA-14-176](#) (R21)

**Application Due Date:** [Standard due dates apply](#)

### *Clinical Studies of Mental Illness Not Involving Treatment Development, Efficacy, or Effectiveness Trials*

National Institute of Mental Health  
[PAR-14-165](#) (Collaborative R01)

**Application Due Date:** [Standard due dates apply](#)

### *Lab to Marketplace: Tools for Brain and Behavioral Research*

National Institute of Mental Health  
National Institute of Deafness and Other Communication Disorders  
[PA-14-250](#) (R43/R44)

**Application Due Date:** [Standard due dates apply](#)

### *Understanding Factors in Infancy and Early Childhood (Birth to 24 months) That Influence Obesity Development*

National Institute of Diabetes and Digestive and Kidney Diseases

Eunice Kennedy Shriver National Institute of Child Health and Human Development

Office of Behavioral and Social Sciences Research

National Institute on Minority Health and Health Disparities  
[PAR-14-323](#) (R01)

**Application Due Date:** [Standard due dates apply](#)

### *Notice of Information on High-Priority Research Areas to Understand and Reduce Mental Health Disparities*

National Institutes of Mental Health

[NOT-MH-14-033](#) (R01, R21, and other opportunities)

**Application Due Date:** [Standard due dates apply](#)

### *Exploratory Studies of Smoking Cessation Interventions for People with Schizophrenia*

National Institute on Drug Abuse  
National Institute of Mental Health  
National Cancer Institute

National Institute on Alcohol Abuse and Alcoholism  
[PAR-14-230](#) (R21/R33)

**Application Due Date:** 12/16/14, plus additional deadlines through 2017

## FACULTY RESEARCH OPPORTUNITIES (NIH CONT.)

---

*Advancing Interventions to Improve Medication Adherence*  
 Office of Behavioral and Social Sciences Research  
 National Eye Institute  
 National Heart, Lung, and Blood Institute  
 National Institute on Alcohol Abuse and Alcoholism  
 National Institute on Deafness and Other Communication Disorders  
 National Institute of Mental Health  
 National Institute of Nursing Research  
 National Institute on Drug Abuse  
 National Cancer Institute  
[PA-14-335](#) (R21)  
**Application Due Date:** [Standard due dates apply](#)  
**(First due date: 02/16/15)**

*Confirmatory Efficacy Clinical Trials of Non-Pharmacological Interventions for Mental Disorders*  
 National Institute of Mental Health  
[RFA-MH-15-340](#) (R01)  
**Application Due Date: 02/18/15**

*Psychosocial and Behavioral Aspects of Bariatric Surgery*  
 National Institute of Diabetes and Digestive and Kidney Diseases  
[RFA-DK-14-026](#) (R01)  
**Letter of Intent Due Date: 03/16/15**

## FACULTY RESEARCH OPPORTUNITIES (OTHER)

---

*Henry P. David Grants for Research And International Travel in Human Reproductive Behavior and Population Studies*  
[APF Guidelines Here](#)  
**Application Due Date: 02/15/15**

APA  
*Esther Katz Rosen Fund Grants*  
[APF Guidelines Here](#)  
**Application Due Date: 03/01/15**

*Wayne F. Placek Grants*  
[APF Guidelines Here](#)  
**Application Due Date 03/01/15**

*The Drs. Rosalee G. and Raymond A. Weiss Research and Program Innovation Grants*  
[APF Guidelines Here](#)  
**Application Due Date: 04/01/15**

*APF Visionary Grants*  
[APF Guidelines Here](#)  
**Application Due Date: 04/01/15**

*David H. and Beverly A. Barlow Grant*  
[APF Guidelines Here](#)  
**Application Due Date: 04/01/15**

*Early Career Research Grant in Developmental Psychology*  
[APA Guidelines Here](#)  
**Application Due Date: 03/15/15**

*NC TraCS \$2k Award*  
[TraCS \\$2k Guidelines](#)  
**Application Due Date: 12/16/14, plus monthly deadlines throughout 2015**





## GRADUATE STUDENTS & POSTDOCTORAL SCHOLARS

### *Ruth L. Kirschstein National Research Service Awards (NRSA)*

Check guidelines for list of participating institutes

[PA-14-147](#) (F-31 Predoctoral)

[PA-14-148](#) (F-31D Predoctoral Diversity)

[PA-14-149](#) (F-32 Postdoctoral)

**Application Due Date:** [Standard due dates apply](#)

### *Aging Research Dissertation Awards to Increase Diversity (R36)*

National Institute on Aging

[PAR-13-152](#)

**Application Due Date:** [Standard due dates apply](#)

### *NIH Pathway to Independence Award (K99/R00)*

Check guidelines for list of participating institutes

[PA-14-042](#)

**Application Due Date:** [Standard due dates apply](#)

### *Drug Abuse Dissertation Research (R36)*

National Institute on Drug Abuse

[PAR-13-182](#)

**Application Due Date:** [Standard due dates apply](#)

### *APA Predoctoral Fellowship in Mental Health and Substance Abuse Services Program*

[APA Guidelines Here](#)

**Application Due Date:** 01/15/15

### *ECP / Graduate Student Scholar Awards*

[APA Guidelines Here](#)

**Application Due Date:** 01/09/15

### *Dissertation Research Grant in Developmental Psychology*

[APA Guidelines Here](#)

**Application Due Date:** 03/15/15

### *Society for the Advancement of Behavior Analysis Grants*

[Sidney W. and Janet R. Bijou Grant](#)

[Innovative Student Research Grant](#)

[International Development Grant](#)

**Application Due Dates:** 01/10/15

### *Pearson Early Career Grant*

[APF Guidelines Here](#)

**Application Due Date:** 12/31/14

### *Randy Gerson Memorial Grant*

[APF Guidelines Here](#)

**Application Due Date:** 02/01/15

### *Henry P. David Grants for Research and International Travel in Human Reproductive Behavior and Population Studies*

[APF Guidelines Here](#)

**Application Due Date:** 02/15/15

### *Esther Katz Rosen Fund Grants*

[APF Guidelines Here](#)

**Application Due Date:** 03/01/15

If you are interested in applying for any of these opportunities, please contact Grants Management Officer (GMO), Phil Lee ([palee@email.unc.edu](mailto:palee@email.unc.edu)).

**If you are interested in applying for any of these opportunities, please contact Grants Management Officer (GMO), [Phil Lee](#).**

**Standard NIH due dates for all activity codes including new submissions, renewals, and resubmissions can be found [here](#).**

Please submit all newsletter contributions or inquiries to [Rachel Sparks](#).