

THIS ISSUE

News & Awards: Page 2
Dept. Events: Page 3
Research Opps: Page 4

IMPT DATES

Wellness Days
February 15—16
March 11—12
April 5

Spring Holiday
April 2

Classes End
May 5

Reading Days
May 6; May 12

FOLLOW US!



Psychology & Neuroscience Department Newsletter

Volume 10 | Issue 4

January 2021

Department News

Dr. Kurt Gray, Associate Professor of Social Psychology, is a recipient of a 2021 University Teaching Award, the William C. Friday/Class of 1986 Award for Excellence in Teaching. This award was created to recognize members of the faculty who have exemplified excellence in inspirational teaching.

Danielle Weber, a graduate student in Clinical Psychology, is a recipient of a 2021 University Teaching Award, the Tanner Award for Excellence in Undergraduate Teaching by a Graduate Teaching Assistant. This award recognizes excellence in inspirational teaching of undergraduate students by graduate teaching assistants.

Dr. Gray and Danielle are among 25 faculty members and graduate students who were named this year's winners. Each will receive a one-time stipend of \$5,000 and framed citation. Congratulations Dr. Gray and Danielle!



Dr. Keely Muscatell, Assistant Professor of Social Psychology, is the recipient of a 2020 American Psychological Association Board of Educational Affairs (BEA) grant. BEA grants are intended to enhance the quality of training for faculty, supervisors, and trainers at the graduate and postgraduate level. With this grant, Dr. Muscatell will host a workshop titled, "Utilizing Inclusive Mentorship Practices to Enhance Equity in Graduate Education in Psychology," in Spring 2021. This half-day workshop will directly enhance the mentorship skills of faculty members, particularly as it relates to mentoring graduate students from marginalized and underrepresented backgrounds.





News, continued

Dr. Sikoya Ashburn, postdoctoral fellow in Cognitive Psychology, has been named a Rising Star by Cell Mentor on their 1,000 Inspiring Black Scientists List. Cell Mentor is a dedicated resource for the skill building a successful career in science requires and their 1,000 Inspiring Black Scientists in America List was created to dismantle the myth that outstanding Black scientists make up a small percentage of the scientific community. Congratulations, Dr. Ashburn. [Check out the list and other inspiring Black scientists online.](#)



28 instructors in Psychology and Neuroscience received a departmental undergraduate teaching commendation for their courses in Fall 2020. These commendations are awarded to faculty and graduate students whose course rating evaluations for their undergraduate courses are in the top 15 to 20% of the Department. Congratulations to all of our Fall 2020 commendation recipients: Ndidi Adeyanju, Donald Baucom, Dan Bauer, Charlotte Boettiger, Marketa Burnett, Steve Buzinski, Vicki Chanon, Sylvia Fitting, Kelly Giovanello, Kurt Gray, Desiree Griffin, Patrick Harrison, Joseph Hopfinger, Chaewon Lee, Rosa Li, Alejandro Martinez, Jen Millechek, Hannah Morgan, Keely Muscatell, Maku Orleans-Pobee, Rachel Penton, Sabrina Robertson, Shaina Roth, William Snider, Rebecca Stephens, Chris Strauss, Sandra Williams, and Alexandra Wojda!

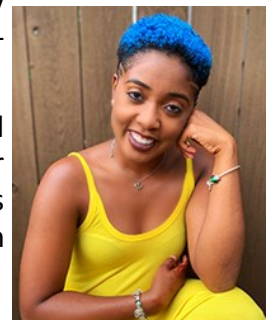


Congratulations to Megan Hine and Armani Johnson, the 2021 recipients of the J. Steven Reznick Diversity and Psychological Research Grant! The Reznick grant supports students from underrepresented backgrounds or those who are interested in conducting research with, or applicable to, populations traditionally underrepresented in research. Students receive a \$2,000 award to offset the need for other part-time work, cover the costs of carrying out research, and/or to attend a professional conference. This award honors Dr. Reznick, a close friend and colleague in the Department of Psychology and Neuroscience and encourages undergraduates to conduct exemplary research.



Megan Hine is a fourth-year undergraduate student majoring in Psychology. She previously worked in Dr. Mitch Prinstein's Peer Relations Lab and is currently pursuing a senior Honors thesis in Dr. Deborah Jones' lab. Megan is fascinated by the intersections of psychology and technology and is drawn to studying how technology can be utilized to enhance access to, engagement in, and outcomes of traditional therapy treatment options for marginalized populations. Her research, funded by a Reznick grant, will focus on how the presence or absence of a co-parent, as well as the quality of the co-parenting relationship, mediates the outcomes of technology-enhanced behavioral parent training for low-income families.

Armani Johnson is a second-year undergraduate majoring in Psychology. She is interested in how parenting influences social, economic, mental, and developmental outcomes for children and young adults, with a particular emphasis on children raised by single parents and those from lower socioeconomic status backgrounds. Armani will pursue her research this Spring, funded by a Reznick grant, in Dr. Shauna Cooper's lab.



We also wish a congratulations to five undergraduates who received Honorable Mentions for the J. Steven Reznick grant! Honorable mentions went to Eyrar Bossiade, Isabel Bravo, Elizabeth Kim, Erin Robinson, and Margaret Wong!



Hour of Action

The Hour of Action in Psychology and Neuroscience began in June 2020 on behalf of the Clinical Program's Diversity Training Committee and is meant to provide a communal space and resource list to channel our anti-racist and diversity/equity-oriented actions. Historically, HOAs have been Fridays from 4—5 PM, but we are shifting the meeting time effective Spring 2021 to **Fridays from 3—4 PM.**

You will no longer receive a weekly reminder email. Instead, please utilize a recurring Google [calendar link](#) that you can integrate into your existing weekly calendar. For Outlook users, a recurring Outlook event was emailed separately.

The ongoing list of resources can be found in this [Google document](#).

You will receive a monthly reminder of these events with relevant links going forward.

Students, faculty, and staff from across the Department are welcome to attend and we strongly encourage groups dedicated to DEI initiatives to bring their committee work/meetings to the HOA.

[Zoom link here!](#)

Departmental Events

[Behavioral and Integrative Neuroscience Seminars](#)

Virtual, 12:30—1:45 pm

- 2/2 Elizabeth Bik, Ph.D.**
Microbiome Digest
Science Integrity Digest
- 2/23 Yasmin Hurd, Ph.D.**
Addiction Institute
Mount Sinai School Med.
- 3/2 Alexander Gomez-A Ph.D.**
Bowles Center
UNC Chapel Hill

[Cognitive Tea Talks](#)

Virtual, 12:30-1:30 pm

- 2/4 Kelly Giovanello, Ph.D.**
Psychology & Neuroscience
UNC Chapel Hill
- 2/11 Neil Mulligan, Ph.D.**
Psychology & Neuroscience
UNC Chapel Hill

[Quantitative Forums](#)

Virtual, 12:30—1:30 pm

- 2/1 Marco Chen**
Psychology & Neuroscience
UNC Chapel Hill
- 2/8 Chris Urban**
Psychology & Neuroscience
UNC Chapel Hill
- 2/22 David MacKinnon, Ph.D.**
Department of Psychology
Arizona State University

[Clinical Lunch Series](#)

Virtual, 12:00—1:00 pm

- 1/29 Steven Roberts, Ph.D.**
Department of Psychology
Stanford University
- 2/5 Student Town Hall**
- 2/12 Danice Brown, Ph.D.**
Department of Psychology
Towson University
- 2/26 Lori Hoggard, Ph.D.**
Department of Psychology
Rutgers University

[Developmental Lunch Series](#)

Virtual, 12:20—1:30 pm

- 2/3 Student Lunch**
- 3/3 Student Lunch**
- 3/10 Marie Camerota, Ph.D.**
Psychiatry & Human Beha.
Brown University

[Social ORGs](#)

Virtual, 12:00—2:30 pm

- 2/1 Sylvia Perry, Ph.D.**
Department of Psychology
Northwestern University
- 2/8 "Breaking Down the Hidden Curriculum of Publishing & Grant Writing"**
- 2/22 Analia Albuja, Ph.D.**
Psychology & Neuroscience
Duke University



Research Opportunities for Faculty

If you are interested in applying for any of these opportunities, contact Phil Lee, Grants Management Officer, at palee@email.unc.edu.



National Institutes of Health

Emergency Competitive Revision to Existing NIH Awards (Emergency Supplement - Clinical Trial Optional)

National Cancer Institute
National Center for Complementary and Integrative Health
National Human Genome Research Institute
National Institute of Allergy and Infectious Diseases
National Institute of Child Health and Human Development
National Institute of Diabetes and Digestive and Kidney Diseases
National Institute of Environmental Health Sciences
National Institute of General Medical Sciences
National Institute on Minority Health and Health Disparities
National Institute of Biomedical Imaging and Bioengineering
[PA-20-135](#)
Application Due Dates: Varies by Institute

Behavioral Tasks Targeting Brain Systems Relevant to Anhedonia (R01 Basic Experimental Studies with Humans Required)

National Institute of Mental Health
[PAR-20-235](#)
Application Due Date: Standard due dates apply

Assay development and screening for discovery of chemical probes, drugs or immunomodulators (R01 Clinical Trial Not Allowed)

National Cancer Institute
National Institute on Deafness and Other

Communication Disorders
National Institute of Mental Health
[PAR-20-271](#)
Application Due Date: Standard due dates apply

Cellular and Molecular Biology of Complex Brain Disorders

National Institute of Mental Health
[PAR-20-263](#) (R01 Clinical Trial Not Allowed)
[PAR-20-264](#) (R21 Clinical Trial Not Allowed)
Application Due Date: Standard due dates apply

Long-Term Effects of Disasters on Health Care Systems Serving Health Disparity Populations (R01- Clinical Trial Optional)
National Institute on Minority Health and Health Disparities
National Cancer Institute
National Institute on Aging
National Institute on Drug Abuse
PA-20-172
Application Due Date: Standard due dates apply

Archiving and Documenting Child Health and Human Development Data Sets (R03 Clinical Trial Not Allowed)
National Institute of Child Health and Human Development
PAR-20-064
Application Due Date: Standard due dates apply

Perception and Cognition Research to Inform Cancer Image Interpretation
National Cancer Institute
National Institute of Biomedical Imaging and Bioengineering
[PAR-19-387](#) (R01 Clinical Trial Optional)
[PAR-19-389](#) (R21 Clinical Trial Optional)
Application Due Date: Standard due dates apply

Mechanisms of Tolerance (R21/R33 - Clinical Trial Required)
National Institute on Alcohol Abuse and

Alcoholism
[PAR-19-311](#)
Application Due Date: Standard due dates apply

Behavioral Science Track Award for Rapid Transition (B/Start)(R03 Clinical Trial Optional)
National Institute on Drug Abuse
[PAR-19-310](#)
Application Due Date: Standard due dates apply

Non-Invasive Neurostimulation in AD/ADRD (R01 Clinical Trial Optional)
National Institute on Aging
National Institute of Mental Health
[PAR-19-298](#)
Application Due Date: Standard due dates apply

Reducing the Duration of Untreated Psychosis in the United States
National Institute of Mental Health
[PAR-19-235](#) (R34 Clinical Trial Required)
[PAR-19-236](#) (R01 Clinical Trial Required)
Application Due Date: Standard due dates apply

Accelerating the Pace of Child Health Research Using Existing Data from the Adolescent Brain Cognitive Development (ABCD) Study
National Institute on Drug Abuse
National Institute on Minority Health and Health Disparities
National Institute of Mental Health
National Cancer Institute
National Center for Complementary and Integrative Health
[PAR-19-162](#) (R01 Clinical Trial Not Allowed)
[PAR-19-163](#) (R21 Clinical Trial Not Allowed)
Application Due Date: Standard due dates apply

End-of-Life and Palliative Needs of Adolescents and Young Adults (AYA) with Serious Illnesses



Research Opportunities, cont.

National Institute of Nursing Research
National Cancer Institute
[PAR-19-136](#) (R01 Clinical Trial Optional)
[PAR-19-153](#) (R21 Clinical Trial Optional)
Application Due Date: [Standard due dates apply](#)

Emotion Regulation, Aging and Mental Disorder
National Institute of Mental Health
[PA-19-094](#) (R01 Clinical Trial Not Allowed)
[PA-19-095](#) (R21 Clinical Trial Not Allowed)
Application Due Date: [Standard due dates apply](#)

Biobehavioral Basis of Chronic Pain
National Institute of Nursing Research
National Cancer Institute
National Institute of Arthritis and Musculoskeletal and Skin Diseases
National Center for Complementary and Integrative Health
Office of Behavioral and Social Sciences Research
[PA-18-943](#) (R21 Clinical Trial Optional)
[PA-18-944](#) (R01 Clinical Trial Optional)
Application Due Date: [Standard due dates apply](#)

Applying a Biopsychosocial Perspective to Self-Management of Chronic Pain
National Institute of Nursing Research
National Cancer Institute
National Center for Complementary and Integrative Health
Office of Behavioral and Social Sciences Research
[PA-18-945](#) (R01 Clinical Trial Optional)
[PA-18-946](#) (R21 Clinical Trial Optional)
Application Due Date: [Standard due dates apply](#)

BRAIN Initiative: Development Optimization, and Validation of Novel Tools and Technologies for Neuroscience Research (SBIR)
National Institute of Mental Health
National Eye Institute
National Institute on Alcohol Abuse and Alcoholism

National Institute of Biomedical Imaging and Bioengineering
Eunice Kennedy Shriver National Institute of Child Health and Human Development
National Institute on Deafness and Other Communication Disorders
National Institute on Drug Abuse
National Institute of Neurological Disorders and Stroke
National Center for Complementary and Integrative Health
[PA-18-870](#) (R41/R42 - Clinical Trials Not Allowed)
[PA-18-871](#) (R43/R44 - Clinical Trial Not Allowed)
Application Due Date: [Standard due dates apply](#)

Lab to Marketplace: Tools for Brain and Behavioral Research (R43/R44 - Clinical Trial Optional)
National Institute of Mental Health
[PA-18-819](#)
Application Due Date: [Standard due dates apply](#)

Analyses of Adherence Strategies and Data Sets from CALERIE to Explore Behavioral and Psychosocial Aspects of Sustained Caloric Restriction in Humans
National Institute on Aging
[PA-18-825](#) (R01 Clinical Trial Not Allowed)
[PA-18-826](#) (R21 Clinical Trial Not Allowed)
Application Due Date: [Standard due dates apply](#)

Alcohol and Other Drug Interactions: Unintentional Injuries and Overdoses: Epidemiology and Prevention
National Institute on Alcohol Abuse and Alcoholism
National Institute on Drug Abuse
[PA-18-861](#) (R03 - Clinical Trial Optional)
[PA-18-862](#) (R21 - Clinical Trial Optional)
[PA-18-863](#) (R01 - Clinical Trial Optional)
Application Due Date: [Standard due dates apply](#)

Development and Optimization of Tasks and Measures for Functional Domains of

Behavior (R01 Clinical Trial Not Allowed)
National Institute of Mental Health
National Institute on Alcohol Abuse and Alcoholism
National Institute on Drug Abuse
[PAR-18-930](#)
Application Due Date: [Standard due dates apply](#)

Innovative Technologies for HIV Behavioral and Social Science Research
National Institute of Mental Health
[PA-18-927](#) (R41/R42 Clinical Trial Optional)
[PA-18-929](#) (R43/R44 Clinical Trial Optional)
Application Due Date: [Standard due dates apply](#)

Development and Testing of Novel Interventions to Improve HIV Prevention, Care, and Program Implementation (R34-Clinical Trial Optional)
National Institute on Drug Abuse
[PA-18-780](#)
Application Due Date: [Standard due dates apply](#)

Pilot Health Services and Economic Research on the Treatment of Drug, Alcohol, and Tobacco Use Disorders (R34 Clinical Trial Optional)
National Institute on Drug Abuse
National Institute on Alcohol Abuse and Alcoholism
[PA-18-774](#)
Application Due Date: [Standard due dates apply](#)

Pilot and Feasibility Studies in Preparation for Drug and Alcohol Abuse Prevention Trials (R34 Clinical Trial Optional)
National Institute on Drug Abuse
National Institute on Alcohol Abuse and Alcoholism
[PA-18-775](#)
Application Due Date: [Standard due dates apply](#)

International Research Collaboration on



Research Opportunities, cont.

Drug Abuse and Addiction Research (R01 Clinical Trial Optional)

National Institute on Drug Abuse

[PA-18-773](#)

Application Due Date: [Standard due dates apply](#)

Identification and Management of Behavioral Symptoms and Mental Health Conditions in Individuals with Intellectual Disabilities (R01 - Clinical Trial Optional)

National Institute of Child Health and Human Development

[PAR-18-766](#)

Application Due Date: [Standard due dates apply](#)

Improving Patient Adherence to Treatment and Prevention Regimens to Promote Health

Office of Behavioral and Social Sciences Research

National Cancer Institute

National Institute on Aging

National Institute on Alcohol Abuse and Alcoholism

National Institute of Allergy and Infectious Diseases

National Institute on Drug Abuse

National Institute of Mental Health

National Institute of Nursing Research

National Institute on Minority Health and Health Disparities

National Center for Complementary and Integrative Health

[PA-18-722](#) (R01 Clinical Trial Optional)

[PA-18-723](#) (R21 Clinical Trial Optional)

Application Due Date: [Standard due dates apply](#)

Women & Sex/Gender Differences in Drug and Alcohol Abuse/Dependence

National Institute on Drug Abuse

National Institute on Alcohol Abuse and Alcoholism

[PA-18-601](#) (R03 Clinical Trial Optional)

[PA-18-602](#) (R21 Clinical Trial Optional)

[PA-18-603](#) (R01 Clinical Trial Optional)

Application Due Date: [Standard due dates apply](#)

Developmentally Tailored HIV Prevention and Care Research for Adolescents and Young Adults

National Institute of Mental Health

National Institute on Drug Abuse

National Institute on Minority Health and Health Disparities

National Institute of Allergy and Infectious Diseases

[PA-18-651](#) (R01 Clinical Trial Optional)

[PA-18-652](#) (R21 Clinical Trial Optional)

[PA-18-653](#) (R34 Clinical Trial Optional)

Application Due Date: [Standard due dates apply](#)

Understanding Processes of Recovery in the Treatment of Alcohol Use Disorder

National Institute on Alcohol Abuse and Alcoholism

[PA-18-619](#) (R01 Clinical Trial Optional)

[PA-18-620](#) (R21 Clinical Trial Optional)

Application Due Date: [Standard due dates apply](#)

Mechanistic investigations of psychosocial stress effects on opioid use patterns

National Institute on Drug Abuse

Office of Behavioral and Social Sciences Research

[PAS-18-624](#) (R01 Clinical Trial Optional)

[PAS-18-625](#) (R21 Clinical Trial Optional)

Application Due Date: [Standard due dates apply](#)

Biobehavioral and Technological Interventions to Attenuate Cognitive Decline in Individuals with Cognitive Impairment or Dementia

National Institute of Nursing Research

National Institute on Aging

[PA 18-347](#) (R21 Clinical Trial Optional)

[PA-18-348](#) (R01 Clinical Trial Optional)

[PA-18-473](#) (R15 Clinical Trial Not Allowed)

Application Due Date: [Standard due dates apply](#)

Synthetic Psychoactive Drugs and Strategic Approaches to Counteract Their Deleterious Effects

National Institute on Drug Abuse

[PAR-18-509](#) (R21 Clinical Trial Optional)

[PAR-18-510](#) (R01 Clinical Trial Optional)

[PAR-18-527](#) (R03 Clinical Trial Optional)

Application Due Date: [Standard due dates apply](#)

Understanding and Modifying Temporal Dynamics of Coordinated Neural Activity

National Institute of Mental Health

[PAR-18-554](#) (R21 Clinical Trial Optional)

[PAR-18-555](#) (R01 Clinical Trial Optional)

Application Due Date: [Standard due dates apply](#)

Research on Comparative Effectiveness and Implementation of HIV/AIDS and Alcohol Interventions (R01 Clinical Trial Optional)

National Institute on Alcohol Abuse and Alcoholism

[PAS-18-557](#)

Application Due Date: [Standard due dates apply](#)

International Research Collaboration on Drug Abuse and Addiction Research

National Institute on Drug Abuse

[PA-18-773](#) (R01 Clinical Trial Optional)

Application Due Date: [Standard due dates apply](#)

Health Services and Economic Research on the Prevention and Treatment of Drug, Alcohol, and Tobacco Abuse

National Institute on Drug Abuse

National Institute on Alcohol Abuse and Alcoholism

[PA-18-774](#) (R34 Clinical Trial Optional)

Application Due Date: [Standard due dates apply](#)

Using Information Technology to Support Systematic Screening and Treatment of Depression in Oncology Practices

National Cancer Institute

[PA-18-492](#) (R21 Clinical Trial Optional)

[PA-18-493](#) (R01 Clinical Trial Optional)

Application Due Date: [Standard due dates apply](#)



Research Opportunities, cont.

Feasibility Clinical Trials of Mind and Body Interventions for NCCIH High Priority Research Topics (R34 Clinical Trial Required)
National Center for Complementary and Integrative Health

[PAR-18-417](#)

Application Due Date: [Standard due dates apply](#)

Healthy Habits: Timing for Developing Sustainable Healthy Behaviors in Children and Adolescents

National Institute of Nursing Research

[PA-18-354](#) (R21 Clinical Trial Optional)

[PA-18-355](#) (R01 Clinical Trial Optional)

Application Due Date: [Standard due dates apply](#)

Strengthening the HIV Pre-Exposure Prophylaxis (PrEP) Care Continuum through Behavioral, Social, and Implementation Science

National Institute of Mental Health

[PA-18-271](#) (R21 Clinical Trial Optional)

[PA-18-281](#) (R01 Clinical Trial Optional)

Application Due Date: [Standard due dates apply](#)

Family-Centered Self-Management of Chronic Conditions (R21)

National Institute of Nursing Research

[PA-18-380](#) (Clinical Trial Optional)

[PA-18-383](#) (Clinical Trial Optional)

Application Due Date: [Standard due dates apply](#)

Addressing Unmet Needs in Persons with Dementia to Decrease Behavioral Symptoms and Improve Quality of Life

National Institute of Nursing Research

[PA-18-147](#) (R01 Clinical Trial Optional)

[PA-18-165](#) (R21 Clinical Trial Optional)

Application Due Date: [Standard due dates apply](#)

Marijuana, Prescription Opioid, or Pre-prescription Benzodiazepine Drug Use Among Older Adults

National Institute on Drug Abuse

National Institute on Aging

[PA-18-061](#) (R01 Clinical Trial Optional)

[PA-18-079](#) (R21 Clinical Trial Optional)

[PA-18-080](#) (R03 Clinical Trial Optional)

Application Due Date: [Standard due dates apply](#)

Neuroscience Research on Drug Abuse

National Institute on Drug Abuse

[PA-18-078](#) (R21 Clinical Trial Optional)

[PA-18-060](#) (R01 Clinical Trial Optional)

Application Due Date: [Standard due dates apply](#)

Typical and Atypical Patterns of Language & Literacy in Dual Language Learners

National Institute on Deafness and Other Communication Disorders

Eunice Kennedy Shriver National Institute of Child Health and Human Development

[PA-18-316](#) (R01 - Clinical Trial Optional)

[PA-18-328](#) (R21 - Clinical Trial Optional)

Application Due Date: [Standard due dates apply](#)

Fundamental Science Research on Mind and Body Approaches

National Center for Complementary and Integrative Health

[PA-18-322](#) (R21 - Clinical Trial Optional)

[PA-18-323](#) (R01 - Clinical Trial Optional)

Application Due Date: [Standard due dates apply](#)

New Onset Depressive Symptoms in Acute Illness

National Institute of Nursing Research

National Institute of Mental Health

[PA-17-487](#) (R21 Clinical Trial Not Allowed)

[PA-17-488](#) (R01 Clinical Trial Not Allowed)

Application Due Date: [Standard due dates apply](#)

Research on the Health of Transgender and Gender Nonconforming Populations

National Institute of Child Health and Human Development

National Cancer Institute

National Human Genome Research Institute

National Institute on Aging

National Institute on Alcohol Abuse and Alcoholism

National Institute of Allergy and Infectious Diseases

National Institute on Deafness and Other Communication Disorders

National Institute of Dental and Craniofacial Research

National Institute of Environmental Health Sciences

National Institute of Mental Health

National Institute of Nursing Research

National Institute on Minority Health and Health Disparities

National Center for Complementary and Integrative Health

Office of AIDS Research

Office of Research on Women's Health

Division of Program Coordination, Planning and Strategic Initiatives: Sexual & Gender Minority Research Office

[PA-18-728](#) (R21 Clinical Trial Optional)

[PA-18-729](#) (R01 Clinical Trial Optional)

Application Due Date: [Standard due dates apply](#)

Understanding and Modifying Temporal Dynamics of Coordinated Neural Activity

National Institute of Mental Health

[PAR-18-554](#) (R21 Clinical Trial Optional)

[PAR-18-555](#) (R01 Clinical Trial Optional)

Application Due Date: [Standard due dates apply](#)

Typical and Atypical Patterns of Language & Literacy in Dual Language Learners

National Institute on Deafness and Other Communication Disorders

Eunice Kennedy Shriver National Institute of Child Health and Human Development

[PA-18-316](#) (R01 - Clinical Trial Optional)

[PA-18-328](#) (R21 - Clinical Trial Optional)

Application Due Date: [Standard due dates apply](#)

First in Human and Early Stage Clinical Trials of Novel Investigational Drugs or Devices for Psychiatric Disorders (U01 Clinical Trial Required)



Research Opportunities, cont.

National Institute of Mental Health PAR-18-427 Application Due Date: Standard due dates apply	apply <i>Innovative Mental Health Services Research Not Involving Clinical Trials (R01)</i> National Institute of Mental Health PAR-17-264 Application Due Date: Standard due dates apply	PA-18-144 (R01 Clinical Trial Optional) PA-18-162 (R21 Clinical Trial Optional) Application Due Date: Standard due dates apply
Cellular and Molecular Biology of Complex Brain Disorders National Institute of Mental Health PAR-17-309 (R01) PAR-17-310 (R21) Application Due Date: Standard due dates apply	<i>NICHD Exploratory/Developmental Research Grant (R21 Clinical Trial Optional)</i> National Institute of Child Health and Human Development PA-18-482 Application Due Date: Standard due dates apply	<i>NINDS Faculty Development Award to Promote Diversity in Neuroscience Research (K01)</i> National Institute of Neurological Disorders and Stroke PAR-18-486 (K01 Clinical Trial Required) PAR-18-490 (K01 Independent Clinical Trial Not Allowed) Application Due Date: Standard due dates apply
<i>Understanding Processes of Recovery in the Treatment of Alcohol Use Disorder</i> National Institute on Alcohol Abuse and Alcoholism PA-18-620 (R21 Clinical Trial Optional) PA-18-619 (R01 Clinical Trial Optional) Application Due Date: Standard due dates apply	<i>Marijuana, Prescription Opioid, or Prescription Benzodiazepine Drug Use Among Older Adults</i> National Institute on Drug Abuse National Institute on Aging PAR-18-061 (R01 Clinical Trial Optional) PAR-18-079 (R21 Clinical Trial Optional) PAR-18-080 (R03 Clinical Trial Optional) Application Due Date: Standard due dates apply	<i>Diet and Physical Activity Assessment Methodology (R01 Clinical Trial Optional)</i> National Institute of Diabetes and Digestive and Kidney Diseases National Cancer Institute National Institute on Alcohol Abuse and Alcoholism National Center for Complementary and Integrative Health Office of Dietary Supplements PA-18-856 Application Due Date: Standard due dates apply
<i>Initiation of a Mental Health Family Navigator Model to Promote Early Access, Engagement and Coordination of Needed Mental Health Services for Children and Adolescents</i> National Institute of Mental Health PAR-18-428 (R01 Clinical Trial Required) PAR-18-429 (R34 Clinical Trial Required) Application Due Date: Standard due dates apply	<i>From Genomic Association to Causation: A Convergent Neuroscience Approach for Integrating Levels of Analysis to Delineate Brain Function in Neuropsychiatry</i> National Institute of Mental Health PAR-17-176 (Collaborative U01) PAR-17-179 (U01) Application Due Date: Standard due dates apply	<i>Physical Activity and Weight Control Interventions Among Cancer Survivors: Effects on Biomarkers of Prognosis and Survival</i> National Cancer Institute PAR-18-893 (R01 Clinical Trial Optional) PAR-18-892 (R21 Clinical Trial Optional) Application Due Date: Standard due dates apply
<i>Pilot Studies to Test the Initiation of a Mental Health Family Navigator Model to Promote Early Access, Engagement and Coordination of Needed Mental Health Services for Children and Adolescents</i> National Institute of Mental Health PAR-18-428 (R01 Clinical Trial Required) PAR-18-429 (R34 Clinical Trial Required) Application Due Date: Standard due dates apply	<i>Formative and Pilot Intervention Research for Prevention and Treatment of HIV/AIDS (R34 Clinical Trial Optional)</i> National Institute of Mental Health PA-18-276 Application Due Date: Standard due dates apply	<i>Biobehavioral and Technological Interventions to Attenuate Cognitive Decline in Individuals with Cognitive Impairment or Dementia</i> National Institute of Nursing Research National Institute on Aging PA-18-347 (R21 Clinical Trial Optional) PA-18-473 (R15 Clinical Trial Optional) PA-18-348 (R01 Clinical Trial Optional) Application Due Date: Standard due dates apply
<i>Effectiveness Trials for Post-Acute Interventions and Services to Optimize Longer-term Outcomes</i> National Institute of Mental Health PAR-18-430 (R01 Clinical Trial Required) PAR-18-431 (R34 Clinical Trial Required) Application Due Date: Standard due dates apply	<i>Health Promotion Among Racial and Ethnic Minority Males</i> National Institute of Nursing Research National Institute of Diabetes and Digestive and Kidney Diseases	



Research Opportunities, cont.

Women & Sex/Gender Differences in Drug and Alcohol Abuse/Dependence

National Institute on Drug Abuse
National Institute on Alcohol Abuse and Alcoholism

[PA-18-601](#) (R03 Clinical Trial Optional)

[PA-18-602](#) (R21 Clinical Trial Optional)

[PA-18-603](#) (R01 Clinical Trial Optional)

Application Due Date: [Standard due dates apply](#)

Clinical Studies of Mental Illness

National Institute of Mental Health

[PAR-19-297](#) (Collaborative R01 Clinical Trial Optional)

Application Due Date: [Standard due dates apply](#)

Lab to Marketplace: Tools for Brain and Behavioral Research

National Institute of Mental Health

National Institute of Deafness and Other Communication Disorders

[PA-18-819](#) (R43/R44 Clinical Trial Optional)

Application Due Date: [Standard due dates apply](#)

BRAIN Initiative: Development, Optimization, and Validation of Novel Tools and Technologies for Neuroscience Research

National Institute of Mental Health

National Institute of Aging

National Institute on Alcohol Abuse and Alcoholism

National Institute on Drug Abuse

National Institute of Neurological Disorders and Stroke

National Institute on Deafness and Other Communication Disorders

[PA-18-870](#) (STTR) (R41/R42 Clinical Trial Not Allowed)

[PA-18-871](#) (SBIR) (R43/R44 Clinical Trial Not Allowed)

Application Due Date: [Standard due dates apply](#)

Research Career Enhancement Award to Advance Therapy Development for Alzheimer's (K18)

National Institute on Aging

[PAR-17-052](#)

Application Due Date: [Standard due dates apply](#)

Leveraging Existing Cohort Studies to Clarify Risk and Protective Factors for Alzheimer's Disease and Related Dementias (R01)

National Institute on Aging

[PAR-17-054](#)

Application Due Date: [Standard due dates apply](#)

Research on Autism Spectrum Disorders

National Institute of Mental Health

National Institute of Child Health and Human Development

National Institute on Deafness and Other Communication Disorders

National Institute of Environmental Health Sciences

National Institute of Neurological Disorders and Stroke

[PA-18-399](#) (R03 Clinical Trial Optional)

[PA-18-400](#) (R21 Clinical Trial Optional)

[PA-18-401](#) (R01 Clinical Trial Optional)

Application Due Date: [Standard due dates apply](#)

Mentored Quantitative Research Development Award

National Heart, Lung, and Blood Institute

National Institute on Aging

National Institute on Alcohol Abuse and Alcoholism

National Institute of Allergy and Infectious Diseases

National Institute of Arthritis and Musculoskeletal and Skin Diseases

National Institute of Biomedical Imaging and Bioengineering

Eunice Kennedy Shriver National Institute of Child Health and Human Development

National Institute on Deafness and Other Communication Disorders

National Institute of Dental and Craniofacial Research

National Institute of Diabetes and Digestive and Kidney Diseases

National Institute on Drug Abuse

National Institute of Environmental Health

Sciences

National Institute of General Medical Sciences

[PA-19-125](#) (Parent K25 - Independent Clinical Trial Required)

[PA-19-124](#) (Parent K25 - Independent Clinical Trial Not Allowed)

Application Due Date: [Standard due dates apply](#)

Development and/or Validation of Devices or Electronic Systems to Monitor or Enhance Mind and Body Interventions

National Center for Complementary and Integrative Health

[PAS-18-120](#) (R43/R44 Clinical Trial Optional)

[PAS-18-121](#) (R41/R42 Clinical Trial Optional)

Application Due Date: [Standard due dates apply](#)

Advancing Research on Alzheimer's Disease (AD) and Alzheimer's-Disease-Related Dementias (ADRD)

National Institute on Aging

[PAS-19-316](#) (R43/R44 Clinical Trial Optional)

[PAS-19-317](#) (R41/R42 Clinical Trial Optional)

Application Due Date: [Standard due dates apply](#)

Chronic Condition Self-Management in Children and Adolescents

National Institute of Nursing Research

[PA-18-151](#) (R01 Clinical Trial Optional)

[PA-18-168](#) (R21 Clinical Trial Optional)

Application Due Date: [Standard due dates apply](#)

Basic Mechanisms of Brain Development Mediating Substance Use and Dependence (R01)

National Institute on Drug Abuse

National Institute on Alcohol Abuse and Alcoholism

[PA-17-119](#)

Application Due Date: [Standard due dates apply](#)



Research Opportunities, cont.

Innovations in Mechanisms and Interventions to Address Mental Health in HIV Prevention and Care Continuum

National Institute of Mental Health
National Institute on Drug Abuse

[PA-18-274](#) (R01 Clinical Trial Optional)

[PA-18-275](#) (R21 Clinical Trial Optional)

Application Due Date: [Standard due dates apply](#)

Advancing our Understanding of the Brain Epitranscriptomics

National Institute of Mental Health
National Institute on Drug Abuse

[PAR-17-152](#) (R21)

[PAR-17-153](#) (R01)

Application Due Date: [Standard due dates apply](#)

Functional Genetics, Epigenetics, and Non-coding RNAs in Substance Use Disorders

National Institute on Drug Abuse

[PA-17-155](#) (R01)

[PA-17-157](#) (R21)

Application Due Date: [Standard due dates apply](#)

Multidisciplinary Studies of HIV/AIDS and Aging

National Institute on Aging

National Cancer Institute

National Institute of Arthritis and Musculoskeletal and Skin Diseases

National Institute of Dental and Craniofacial Research

National Institute of Diabetes and Digestive and Kidney Diseases

National Institute of Mental Health

National Institute of Neurological Disorders and Stroke

[PAR-21-068](#) (R01 Clinical Trial Optional)

[PAR-21-069](#) (R21 Clinical Trial Optional)

Application Due Date: [Standard AIDS due dates apply](#)

Mood Disorders in People Living with HIV: Mechanisms and Pathways

National Institute of Mental Health

[RFA-MH-21-116](#) (R01 Clinical Trial Optional)

[RFA-MH-21-117](#) (R21 Clinical Trial Optional)

Application Due Date: [Standard AIDS due dates apply](#)

Leveraging Big Data Science to Elucidate the Mechanisms of HIV Activity and Interaction with Substance Use Disorder

National Institute on Drug Abuse

[RFA-DA-21-040](#) (R01 - Clinical Trials Not Allowed)

[RFA-DA-21-041](#) (R21 - Clinical Trials Not Allowed)

Application Due Date: [Standard AIDS due dates apply](#)

New Models of Integrated HIV/AIDS, Addiction, and Primary Care Services

National Institute on Drug Abuse

[PAR-20-273](#) (R01 Clinical Trial Required)

[PAR-20-274](#) (R34 Clinical Trial Optional)

Application Due Date: [Standard AIDS due dates apply](#)

Innovations in HIV Testing, Adherence, and Retention to Optimize HIV Care Continuum Outcomes

National Institute of Mental Health

[PA-18-277](#) (R21 Clinical Trial Optional)

[PA-18-278](#) (R01 Clinical Trial Optional)

Application Due Date: [Standard AIDS due dates apply](#)

AIDS-Science Track Award for Research Transition (R03 Clinical Trial Optional)

National Institute on Drug Abuse

[PA-18-916](#)

Application Due Date: [Standard AIDS due dates apply](#)

HIV/AIDS High Priority Drug Abuse Research (R01 Clinical Trial Optional)

National Institute on Drug Abuse

[PAS-18-915](#)

Application Due Date: [Standard AIDS due dates apply](#)

Targeted basic behavioral and social science and intervention development for HIV prevention and care

National Institute of Mental Health

[PA-18-272](#) (R21 Clinical Trial Optional)

[PA-18-273](#) (R01 Clinical Trial Optional)

Application Due Date: [Standard AIDS due dates apply](#)

Targeted Implementation Science to Achieve 90/90/90 Goals for HIV/AIDS Prevention and Treatment

National Institute of Mental Health

[PA-18-279](#) (R01 Clinical Trial Optional)

[PA-18-280](#) (R21 Clinical Trial Optional)

Application Due Date: [Standard AIDS due dates apply](#)

Engaging Men in HIV Testing, Prevention, and Care (R21 Clinical Trial Optional)

National Institute of Allergy and Infectious Diseases

National Institute of Mental Health

[PA-19-050](#)

Application Due Date: [Standard AIDS due dates apply](#)

Formative and Pilot Intervention Research for Prevention and Treatment of HIV/AIDS (R34 Clinical Trial Optional)

National Institute of Mental Health

[PA-20-141](#)

Application Due Date: [Standard AIDS due dates apply](#)

Innovations in HIV Prevention, Testing, Adherence and Retention to Optimize HIV Prevention and Care Continuum Outcomes

National Institute of Mental Health

[PA-20-144](#) (R01 Clinical Trial Optional)

[PA-20-145](#) (R21 Clinical Trial Optional)

Application Due Date: [Standard AIDS due dates apply](#)

Early Stage Investigator HIV/AIDS Research Using Nonhuman Primate (NHP) Models (R21 Clinical Trial Not Allowed)

National Institute of Mental Health

[PAR-20-212](#)

Application Due Date: [Standard AIDS due dates apply](#)

Improving Smoking Cessation Intervention



Research Opportunities, cont.

tions among People Living with HIV

National Cancer Institute

National Institute on Drug Abuse

National Institute on Minority Health and Health Disparities

[RFA-CA-20-035](#) (R01 Clinical Trial Optional)

[RFA-CA-20-036](#) (R21 Clinical Trial Optional)

Application Due Date: [Standard AIDS due dates apply](#)

NIDA Avant-Garde Award Program for HIV/AIDS and Substance Use Disorder Research (DP1, Clinical Trial Optional)

National Institute on Drug Abuse

[PAR-20-221](#)

Application Due Date: [Standard AIDS due dates apply](#)

Avenir Award Program for Research on Substance Use Disorders and HIV/AIDS

National Institute on Drug Abuse

[PAR-20-224](#) (DP2 Clinical Trial Optional)

Application Due Date: [Standard AIDS due dates apply](#)

Notice of Special Interest (NOSI) regarding the Availability of Administrative Supplements and Urgent Competitive Revisions for Research on the 2019 Novel Coronavirus and the Behavioral and Social Sciences

Office of Behavioral and Social Sciences Research

National Heart, Lung, and Blood Institute

National Institute on Aging

National Institute on Alcohol Abuse and Alcoholism

National Institute of Diabetes and Digestive and Kidney Diseases

National Institute of Environmental Health Sciences

National Center for Complementary and Integrative Health

National Cancer Institute

National Institute of Child Health and Human Development

National Institute of Nursing Research

[NOT-OD-20-097](#)

Application Due Date: Rolling deadlines through 04/01/21

Notice of Special Interest (NOSI) regarding the Availability of Administrative Supplements and Urgent Competitive Revisions for Mental Health Research on the 2019

Novel Coronavirus

National Institute of Mental Health

National Institute on Aging

National Institute on Alcohol Abuse and Alcoholism

National Institute on Minority Health and Health Disparities

[NOT-MH-20-047](#)

Application Due Date: Rolling deadlines through 04/16/21

Notice of Special Interest: Availability of Administrative Supplements and Competitive Revision Supplements on Coronavirus Disease 2019 (COVID-19) within the Mission of NIAAA

National Institute on Alcohol Abuse and Alcoholism

[NOT-AA-20-011](#)

Application Due Date: Rolling deadlines through 04/16/21

Notice of Special Interest (NOSI): Research to Address Vaccine Hesitancy, Uptake, and Implementation among Populations that Experience Health Disparities

National Institute on Minority Health and Health Disparities

National Cancer Institute

National Heart, Lung, and Blood Institute

National Institute of Allergy and Infectious Diseases

National Institute of Arthritis and Musculoskeletal and Skin Diseases

National Institute of Dental and Craniofacial Research

National Institute of Mental Health

National Institute of Nursing Research

Office of Behavioral and Social Sciences Research

Office of Disease Prevention

Office of Research on Women's Health

[NOT-MD-21-008](#)

Application Due Date: Rolling deadlines through 01/08/22

Strategic Alliances for Medications Development to Treat Substance Use Disorders (R01 Clinical Trial Optional)

National Institute on Drug Abuse

[PAR-19-318](#)

Application Due Date: Rolling deadlines through 2022

Grand Opportunity in Medications Development for Substance-Use Disorders (U01 - Clinical Trial Optional)

National Institute on Drug Abuse

[PAR-19-327](#)

Application Due Date: Rolling deadlines through 2022

Notice of Special Interest (NOSI): Modeling Social Contagion of Substance Use Epidemics

National Institute on Drug Abuse

NOT-DA-20-009

Application Due Date: Rolling deadlines through 01/28/23

Notice of Special Interest: Administrative Supplements to Promote Research Continuity and Retention of NIH Mentored Career Development (K) Award Recipients and Scholars

National Institutes of Health

[NOT-OD-20-054](#)

Application Due Date: Rolling deadlines through 03/06/23

Notice of Special Interest (NOSI): Administrative Supplement for Continuity of Biomedical and Behavioral Research Among First-Time Recipients of NIH Research Project Grant Awards

National Institutes of Health

[NOT-OD-20-055](#)

Application Due Date: Rolling deadlines through 03/06/23

Notice of Special Interest (NOSI): Mental Health Comorbidities in HIV Prevention and Treatment



Research Opportunities, cont.

National Institutes of Health

[NOT-MH-20-013](#)

Application Due Date: Rolling deadlines through 05/08/23

Notice of Special Interest: Stigma or Other Social Determinants of Health (SDOH) in HIV Prevention and Treatment

National Institutes of Health

[NOT-MH-20-020](#)

Application Due Date: Rolling deadlines through 05/08/23

Notice of Special Interest (NOSI): Strengthening the HIV Care Continuum

National Institutes of Health

[NOT-MH-20-023](#)

Application Due Date: Rolling deadlines through 05/08/23

Notice of Special Interest (NOSI): Implementation Science to Advance the United States HIV Prevention and Treatment Goals and the Global HIV Prevention and Treatment Targets

National Institutes of Health

[NOT-MH-20-024](#)

Application Due Date: Rolling deadlines through 05/08/23

Notice of Special Interest: Developmentally Tailored HIV Prevention and Care Research for Adolescents and Young Adults

National Institutes of Health

[NOT-MH-20-035](#)

Application Due Date: Rolling deadlines through 05/08/23

Notice of Special Interest: Administrative Supplements for COVID-19 Impacted NIMH Research

National Institute of Mental Health

[NOT-MH-21-120](#)

Application Due Date: Rolling deadlines through 06/02/23

Notice of Special Interest (NOSI): Neuroimmune Signaling and Function in Substance Use Disorders

National Institute on Drug Abuse

[NOT-DA-20-046](#)

Application Due Date: Rolling deadlines through 09/08/23

Notice of Special Interest (NOSI): Cannabis, Prescription Opioid, or Prescription Benzodiazepine Drug Use Among Older Adults

National Institute on Drug Abuse

National Institute on Aging

[NOT-DA-20-014](#)

Application Due Date: Rolling deadlines through 09/08/23

Notice of Special Interest (NOSI): Promoting Research on Interoception and Its Impact on Health and Disease

National Center for Complementary and Integrative Health

National Cancer Institute

National Institute on Aging

National Institute on Drug Abuse

National Institute of Dental and Craniofacial Research

National Institute of Environmental Health Sciences

National Institute of Mental Health

Office of Behavioral and Social Sciences Research

Office of Research on Women's Health

[NOT-AT-21-002](#)

Application Due Date: Rolling deadlines through 05/07/24

NIDA Mentored Clinical Scientist Development Program Award in Substance Use and Substance Use Disorder Research (K12 Clinical Trial Optional)

National Institute on Drug Abuse

[PAR-20-249](#)

Application Due Dates: 03/01/21, plus additional deadlines through 2023

Supplements to Advance Research (STAR) from Projects to Programs (Admin Supp Clinical Trial Optional)

National Institute on Alcohol Abuse and Alcoholism

[PA-18-647](#)

Application Due Date: 03/01/21

BRAIN Initiative: Exploratory Team-Research BRAIN Circuit Programs - eTeamBCP (U01 Clinical Trials Optional)

National Institute of Neurological Disorders and Stroke

National Eye Institute

National Institute on Aging

National Institute on Alcohol Abuse and Alcoholism

National Institute of Biomedical Imaging and Bioengineering

National Institute of Child Health and Human Development

National Institute on Deafness and Other Communication Disorders

National Institute on Drug Abuse

National Institute of Mental Health

National Center for Complementary and Integrative Health

[RFA-NS-20-029](#)

Application Due Date: 03/01/21

Digital Healthcare Interventions to Address the Secondary Health Effects Related to Social, Behavioral, and Economic Impact of COVID-19 (R01 - Clinical Trial Optional)

National Institute of Mental Health

National Center for Advancing Translational Sciences

National Center for Complementary and Integrative Health

National Eye Institute

National Institute on Aging

National Institute on Alcohol Abuse and Alcoholism

National Institute of Child Health and Human Development

National Institute on Drug Abuse

National Institute on Deafness and Other Communication Disorders

National Institute of Dental and Craniofacial Research

National Institute on Minority Health and Health Disparities

National Institute of Nursing Research

Office of Behavioral and Social Sciences Research

Office of Disease Prevention

Office of Research on Women's Health



Research Opportunities, cont.

[PAR-20-243](#)

Application Due Date: 03/02/21

Secondary Analyses of Existing Datasets of Tobacco Use and Health (R21 Clinical Trial Not Allowed)

Division of Program Coordination, Planning and Strategic Initiatives, Office of Disease Prevention
National Cancer Institute
National Heart, Lung, and Blood Institute
National Institute on Alcohol Abuse and Alcoholism
National Institute on Drug Abuse
National Institute of Environmental Health Sciences

[RFA-OD-19-022](#)

Application Due Date: 03/08/21

BRAIN Initiative Cell Census Network (BICCN) Scalable Technologies and Tools for Brain Cell Census (R01 Clinical Trial Not Allowed)

National Institute of Mental Health
National Center for Complementary and Integrative Health
National Eye Institute
National Institute on Aging
National Institute on Alcohol Abuse and Alcoholism
National Institute of Biomedical Imaging and Bioengineering
National Institute of Child Health and Human Development
National Institute on Drug Abuse
National Institute on Deafness and Other Communication Disorders
National Institute of Neurological Disorders and Stroke

[RFA-MH-21-140](#)

Application Due Date: 03/08/21

Explainable Artificial Intelligence for Decoding and Modulating Neural Circuit Activity Linked to Behavior (R01 Clinical Trial Optional)

National Institute of Mental Health

[PAR-19-344](#)

Application Due Date: 03/10/21 and

03/10/22

Exploratory Clinical Neuroscience Research on Substance Use Disorders (R61/R33 Clinical Trial Optional)

National Institute on Drug Abuse

[PAR-19-282](#)

Application Due Dates: 03/10/21, plus additional deadlines through 2023

Research on Current Topics in Alzheimer's Disease and Its Related Dementias

National Institute on Aging
National Institute of Neurological Disorders and Stroke

[PAR-19-070](#) (R01 Clinical Trial Optional)

[PAR-19-071](#) (R21 Clinical Trial Not Allowed)

Application Due Dates: 03/11/21, plus additional deadlines through 2021

Extracellular RNA carrier subclasses in processes relevant to Substance Use Disorders or HIV infection

National Institute on Drug Abuse

[PAR-20-147](#) (R01- Clinical Trial Not Allowed)

[PAR-20-148](#) (R21- Clinical Trial Not Allowed)

Application Due Dates: 03/15/21, plus additional deadlines through 2023

Mid-Career Enhancement Awards to Integrate Basic Behavioral, Biomedical, and/or Social Scientific Processes (K18 No Independent Clinical Trials)

NIH Basic Behavioral and Social Science Opportunity Network

National Center for Complementary and Integrative Health

National Cancer Institute

National Institute on Alcohol Abuse and Alcoholism

National Institute of Environmental Health Sciences

National Institute of Mental Health

National Institute on Minority Health and Health Disparities

Office of Behavioral and Social Sciences

Research

[PAR-20-211](#) (K18 No Independent Clinical Trials)

[PAR-20-226](#) (K18 Basic Experimental Studies with Humans Required)

Application Due Dates: 03/17/21, plus additional deadlines through 2023

Health Services Research on Minority Health and Health Disparities (R01- Clinical Trial Optional)

National Institute on Minority Health and Health Disparities

National Institute on Alcohol Abuse and Alcoholism

National Institute on Drug Abuse

Office of Behavioral and Social Sciences Research

Office of Disease Prevention

Office of Research on Women's Health

[PAR-20-310](#)

Application Due Dates: 03/17/21, plus additional deadlines through 2023

From Genomic Association to Causation: A Convergent Neuroscience Approach to Linking Levels of Analysis for Understanding Neuropsychiatric Disorders (U19 Clinical Trial Optional)

National Institute of Mental Health

[RFA-MH-21-165](#)

Application Due Date: 03/17/21

Summer Research Education Experience Program (R25 Clinical Trial Not Allowed)

National Institute of Neurological Disorders and Stroke

National Institute on Alcohol Abuse and Alcoholism

National Institute of Biomedical Imaging and Bioengineering

National Institute on Drug Abuse

National Institute of Environmental Health Sciences

[PAR-19-197](#)

Application Due Date: 03/17/21

Research on biopsychosocial factors of social connectedness and isolation on



Research Opportunities, cont.

health, wellbeing, illness, and recovery

NIH Basic Behavioral and Social Science
Opportunity Network

National Eye Institute

National Institute on Aging

National Institute on Alcohol Abuse and
Alcoholism

National Institute of Arthritis and Muscu-
loskeletal and Skin Diseases

National Institute of Child Health and Hu-
man Development

National Institute on Deafness and Other
Communication Disorders

National Institute on Drug Abuse

National Institute of Mental Health

National Institute of Neurological Disor-
ders and Stroke

National Institute of Nursing Research

National Institute on Minority Health and
Health Disparities

National Center for Complementary and
Integrative Health

National Cancer Institute

Office of Behavioral and Social Sciences
Research

[PAR-19-373](#) (R01 Clinical Trials Not Al-
lowed)

[PAR-19-384](#) (R01 Basic Experimental Stud-
ies with Humans Required)

Application Due Date: 03/17/21

*Social Drivers of Mental Illnesses in Low-
and Middle-Income Countries: Mecha-
nisms and Pathways of Interventions for
Youth (R01 Clinical Trial Optional)*

National Institute of Mental Health

[RFA-MH-21-160](#)

Application Due Date: 03/18/21

*Genetic analysis of non-human animal
models to understand the genomic archi-
tecture of substance use disorders and
addictive behaviors (U01 Clinical Trial Not
Allowed)*

National Institute on Drug Abuse

[PAR-18-789](#)

Application Due Date: 03/19/21

Integrative Research on Polysubstance

*Abuse and Disorder (R61/R33 Clinical Trial
Optional)*

National Institute on Drug Abuse

National Cancer Institute

National Institute on Alcohol Abuse and
Alcoholism

[PAR-20-035](#)

**Application Due Dates: 03/17/21, plus
additional dates through 2022**

*Behavioral & Integrative Treatment Devel-
opment Program*

National Institute on Drug Abuse

National Institute on Alcohol Abuse and
Alcoholism

[PAR-19-212](#) (R01 Clinical Trial Optional)

[PAR-19-213](#) (R34 Clinical Trial Optional)

**Application Due Dates: 03/23/21, plus
additional deadlines through 2022**

*HEAL Initiative: HEALthy Brain and Child
Development Study*

National Institute on Drug Abuse

National Institute on Alcohol Abuse and
Alcoholism

National Institute of Biomedical Imaging
and Bioengineering

National Institute of Environmental Health
Sciences

National Institute of Mental Health
National Institute on Minority Health and
Health Disparities

National Institute of Neurological Disor-
ders and Stroke

Office of Behavioral and Social Sciences
Research

Office of Research on Women's Health

[RFA-DA-21-020](#) (Collaborative U01- Cli-
cal Trial Not Allowed)

[RFA-DA-21-021](#) (U01 - Clinical Trial Not
Allowed)

[RFA-DA-21-022](#) (Consortium Administra-
tive Core U24 - Clinical Trial Not Allowed)

[RFA-DA-21-023](#) (Data Coordinating Center
U24)

Application Due Date: 03/31/21

*HEAL Initiative: Integrative Management
of chronic Pain and OUD for Whole Recov-*

ery (IMPOWR)

National Institute on Drug Abuse

National Center for Complementary and
Integrative Health

National Institute on Alcohol Abuse and
Alcoholism

National Institute of Arthritis and Muscu-
loskeletal and Skin Diseases

National Institute of Mental Health

[RFA-DA-21-029](#) (Coordination and Dissem-
ination Center R24 Clinical Trial Optional)

[RFA-DA-21-030](#) (Research Centers RM1
Clinical Trial Required)

Application Due Date: 03/31/21

*Mental Health Research Dissertation
Grant to Enhance Workforce Diversity
(R36)*

National Institute of Mental Health

[PAR-18-894](#)

Application Due Date: 04/06/21

*HEAL Initiative: Development of Therapies
and Technologies Directed at Enhanced
Pain Management*

National Institute of Neurological Disor-
ders and Stroke

National Center for Complementary and
Integrative Health

National Cancer Institute

National Eye Institute

National Heart, Lung, and Blood Institute

National Institute on Aging

National Institute on Alcohol Abuse and
Alcoholism

National Institute of Biomedical Imaging
and Bioengineering

National Institute of Child Health and Hu-
man Development

National Institute of Diabetes and Diges-
tive and Kidney Diseases

National Institute of General Medical Sci-
ences

National Institute of Mental Health

National Institute on Minority Health and
Health Disparities

National Institute of Nursing Research

[RFA-NS-20-008](#) (R41/R42 Clinical Trial Re-
quired)



Research Opportunities, cont.

[RFA-NS-20-009](#) (R41/R42 Clinical Trial Not Allowed)

[RFA-NS-20-010](#) (R43/R44 - Clinical Trial Required)

[RFA-NS-20-011](#) (R43/R44 - Clinical Trial Not Allowed)

Application Due Dates: 04/06/21, plus additional dates through 2022

BRAIN Initiative: New Concepts and Early-Stage Research for Recording and Modulation in the Nervous System (R21) (Clinical Trial Not Allowed)

National Eye Institute

National Center for Complementary and Integrative Health

National Institute on Aging

National Institute on Alcohol Abuse and Alcoholism

National Institute of Biomedical Imaging and Bioengineering

National Institute of Child Health and Human Development

National Institute on Drug Abuse

National Institute on Deafness and Other Communication Disorders

National Institute of Mental Health

National Institute of Neurological Disorders and Stroke

Office of Behavioral and Social Sciences Research

[RFA-EY-21-001](#)

Application Due Dates: 05/03/21, plus additional deadlines through 2023

Advanced Laboratories for Accelerating the Reach and Impact of Treatments for Youth and Adults with Mental Illness (ALACRITY) Research Centers (P50 Clinical Trial Optional)

National Institute of Mental Health

[PAR-20-293](#)

Application Due Dates: 05/17/21, plus additional deadlines through 2023

Jointly Sponsored Ruth L. Kirschstein National Research Service Award Institutional Predoctoral Training Program in the Neurosciences (T32 Clinical Trial Not Allowed)

National Institute of Neurological Disorders and Stroke

National Institute on Aging

National Institute on Drug Abuse

National Institute of Mental Health

National Institute of General Medical Sciences

[PAR-20-076](#)

Application Due Dates: 05/25/21, plus additional deadlines through 2022

Silvio O. Conte Centers for Basic Neuroscience or Translational Mental Health Research (P50 Clinical Trial Optional)

National Institute of Mental Health

[PAR-20-093](#)

Application Due Dates: 05/26/21, plus additional deadlines through 2022

Stephen I. Katz Early Stage Investigator Research Project Grant

National Institutes of Health

[PAR-21-038](#) (R01 Clinical Trial Not Allowed)

[PAR-21-039](#) (R01 Basic Experimental Studies with Humans Required)

Application Due Dates: 05/26/21, plus additional dates through 2023

Practice-Based Suicide Prevention Research Centers (P50 Clinical Trial Optional)

National Institute of Mental Health

[PAR-20-286](#)

Application Due Dates: 05/26/21, plus additional dates through 2023

Standard NIH due dates for all activity codes including new submissions, renewals, and resubmissions can be found [here](#)

APA

Early Career Research Grant in Developmental Psychology

[APA Guidelines Here](#)

Application Due Date: 03/15/21

APF

F.J. McGuigan Early Career Investigator Research Grant on Understanding the Human Mind

[APF Guidelines Here](#)

Application Due Date: 03/01/21

Esther Katz Rosen Fund Grants

[APF Guidelines Here](#)

Application Due Date: 03/01/21

Wayne F. Placek Grants

[APF Guidelines Here](#)

Application Due Date 03/01/21

John and Polly Sparks Early Career Grant for Psychologists Investigating Serious Emotional Disturbance (SED)

[APF Guidelines Here](#)

Application Due Date: 03/15/21

Division 17 Counseling Psychology Grants

[APF Guidelines Here](#)

Application Due Date: 04/01/21

APF Visionary Grants

[APF Guidelines Here](#)

Application Due Date: 04/01/21

APF/The Trust Grant in Honor of Eric A. Harris, EdD, JD

[APF Guidelines Here](#)

Application Due Date: 05/01/21

CECF

Caplan Early Childhood Foundation

<http://earlychildhoodfoundation.org/>

LoI Due Date: 01/31/21

HFSP

Human Frontier Science Program – Program Grants

[HFSP Guidelines Here](#)

Letter of Intent Due Date: 03/30/21



Research Opportunities, cont.

RSF

Social Inequality (plus additional programs)
 Russell Sage Foundation
[Funding Opportunity Information](#)
Letter of Inquiry Due Date: 05/04/21
Application Due Date: 08/11/21

UNC

NC TraCS \$2k Award
[TraCS \\$2k Guidelines](#)
Application Due Dates: 02/16/21, plus monthly deadlines through 2021

TraCS Health Research Stakeholder Engagement \$2k Pilot Vouchers
[TraCS Guidelines Here](#)
Application Due Dates: 02/16/21, plus monthly deadlines through 2021

NC TraCS \$5k-\$50k Grants (50% matching

required)
[TraCS \\$5k-\\$50k Guidelines](#)
Application Due Date: 03/01/21, plus additional deadlines through 2021



Research Opportunities for Graduate Students & Postdocs

If you are interested in applying for any of these opportunities, contact Phil Lee, Grants Management Officer, at palee@email.unc.edu.



National Institutes of Health

Ruth L. Kirschstein National Research Service Awards (NRSA)
 Check guidelines for list of participating institutes
[PA-19-195](#) (F31 Predoctoral)
[PA-19-196](#) (F31D Predoctoral Diversity)
[PA-19-188](#) (F32 Postdoctoral)
Application Due Date: [Standard due dates apply](#)

NINDS Ruth L. Kirschstein National Research Service Award (NRSA) for Training of Postdoctoral Fellows (F32)
 National Institute of Neurological Disorders and Stroke
[PAR-16-458](#) (F32 Postdoctoral)
Application Due Date: [Standard due dates apply](#)

NIH Pathway to Independence Award

(Parent K99/R00)
 Check guidelines for list of participating institutes
[PA-19-129](#) (Independent Clinical Trial Required)
[PA-19-130](#) (Independent Clinical Trial Not Allowed)
Application Due Date: [Standard due dates apply](#)

Drug Abuse Dissertation Research (R36)
 National Institute on Drug Abuse
[PA-16-443](#)
Application Due Date: [Standard due dates apply](#)

Mentored Research Scientist Development Award (Parent K01)
 Check guidelines for list of participating institutes
[PA-19-127](#) (Independent Clinical Trial Required)
[PA-19-126](#) (Independent Clinical Trial Not Allowed)
Application Due Date: [Standard due dates apply](#)

Mentored Quantitative Research Development Award
 Check guidelines for list of participating

institutes
[PA-19-125](#) (Parent K25 - Independent Clinical Trial Required)
[PA-19-124](#) (Parent K25 - Independent Clinical Trial Not Allowed)
Application Due Date: [Standard due dates apply](#)

NINDS Advanced Postdoctoral Career Transition Award to Promote Diversity in Neuroscience Research (K22)
 National Institute of Neurological Disorders and Stroke
[PAR-18-468](#)
Application Due Date: [Standard due dates apply](#)

HIV/AIDS Scholars Using Nonhuman Primate (NHP) Models Program (K01 Independent Clinical Trial Not Allowed)
 National Institute of Allergy and Infectious Diseases
 National Institute of Mental Health
[PAR-20-231](#)
Application Due Date: [Standard AIDS due dates apply](#)

Mental Health Research Dissertation Grant to Enhance Workforce Diversity (R36 Independent Clinical Trial Not Al-



Research Opportunities, cont.

lowed)

National Institute of Mental Health

[PAR-18-894](#)

Application Due Date: 04/06/21

NIH Blueprint Diversity Specialized Pre-doctoral to Postdoctoral Advancement in Neuroscience (D-SPAN) Award (F99/K00 Independent Clinical Trial Not Allowed)

National Institute of Neurological Disorders and Stroke

National Eye Institute

National Institute on Aging

National Institute on Alcohol Abuse and Alcoholism

National Institute of Biomedical Imaging and Bioengineering

National Institute of Child Health and Human Development

National Institute of Dental and Craniofacial Research

National Institute on Drug Abuse

National Institute of Environmental Health Sciences

National Institute of Mental Health

National Institute of Nursing Research

National Center for Complementary and Integrative Health

Office of Behavioral and Social Sciences Research

[RFA-NS-19-011](#)

Application Due Date: 04/15/21

Research Grant on Understanding the Human Mind

[APF Guidelines Here](#)

Application Due Date: 03/01/21

Esther Katz Rosen Fund Grants

[APF Guidelines Here](#)

Application Due Date: 03/01/21

Wayne F. Placek Grants

[APF Guidelines Here](#)

Application Due Date 03/01/21

John and Polly Sparks Early Career Grant for Psychologists Investigating Serious Emotional Disturbance (SED)

[APF Guidelines Here](#)

Application Due Date: 03/15/21

APF Visionary Grants

[APF Guidelines Here](#)

Application Due Date: 04/01/21

Paul E. Henkin School Psychology Travel Grant

[APF Guidelines Here](#)

Application Due Date: 04/15/21

APF/The Trust Grant in Honor of Eric A. Harris, EdD, JD

[APF Guidelines Here](#)

Application Due Date: 05/01/21

APA

Early Career Research Grant in Developmental Psychology

[APA Guidelines Here](#)

Application Due Date: 03/15/21

Dissertation Research Grant in Developmental Psychology

[APA Guidelines Here](#)

Application Due Date: 03/15/21

APF

F.J. McGuigan Early Career Investigator

